

# SHISA3 Antibody (C-term)

Affinity Purified Rabbit Polyclonal Antibody (Pab)  
Catalog # AP11797b

## Product Information

---

|                          |                                |
|--------------------------|--------------------------------|
| <b>Application</b>       | WB, IHC-P, E                   |
| <b>Primary Accession</b> | <a href="#">A0PIX4</a>         |
| <b>Other Accession</b>   | <a href="#">NP_001073974.1</a> |
| <b>Reactivity</b>        | Mouse                          |
| <b>Host</b>              | Rabbit                         |
| <b>Clonality</b>         | Polyclonal                     |
| <b>Isotype</b>           | Rabbit IgG                     |
| <b>Clone Names</b>       | RB29208                        |
| <b>Calculated MW</b>     | 25832                          |
| <b>Antigen Region</b>    | 158-186                        |

## Additional Information

---

|                           |   |
|---------------------------|---|
| <b>Gene ID</b>            | 152573  |
| <b>Other Names</b>        | Protein shisa-3 homolog, SHISA3   |
| <b>Target/Specificity</b> | This SHISA3 antibody is generated from rabbits immunized with a KLH conjugated synthetic peptide between 158-186 amino acids from the C-terminal region of human SHISA3.    |
| <b>Dilution</b>           | WB~~1:1000 IHC-P~~1:100~500 E~~Use at an assay dependent concentration.   |
| <b>Format</b>             | Purified polyclonal antibody supplied in PBS with 0.05% (V/V) Proclin 300. This antibody is purified through a protein A column, followed by peptide affinity purification. |
| <b>Storage</b>            | Maintain refrigerated at 2-8°C for up to 2 weeks. For long term storage store at -20°C in small aliquots to prevent freeze-thaw cycles.                                     |
| <b>Precautions</b>        | SHISA3 Antibody (C-term) is for research use only and not for use in diagnostic or therapeutic procedures.  |

## Protein Information

---

|                          |   |
|--------------------------|---|
| <b>Name</b>              | SHISA3  |
| <b>Function</b>          | Plays an essential role in the maturation of presomitic mesoderm cells by individual attenuation of both FGF and WNT signaling. |
| <b>Cellular Location</b> | Endoplasmic reticulum membrane {ECO:0000250,  |

## Background

---

SHISA3 plays an essential role in the maturation of presomitic mesoderm cells by individual attenuation of both FGF and WNT signaling (By similarity).

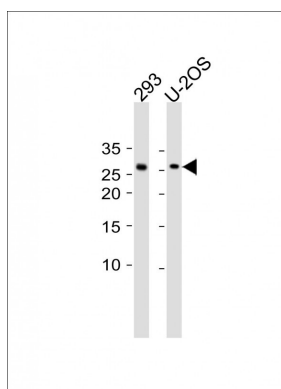
## References

---

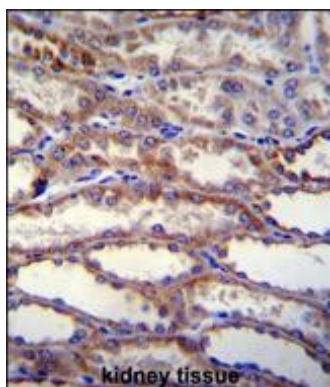
Furushima, K., et al. Dev. Biol. 306(2):480-492(2007)

## Images

---



All lanes: Anti-SHISA3 Antibody (C-term) at 1:1000 dilution  
Lane 1: 293 whole cell lysate Lane 2: U-20S whole cell lysate  
Lysates/proteins at 20 µg per lane. Secondary: Goat Anti-Rabbit IgG, (H+L), Peroxidase conjugated (ASP1615) at 1/15000 dilution. Observed band size: 26 KDa  
Blocking/Dilution buffer: 5% NFDN/TBST.



SHISA3 Antibody (C-term) (Cat. #AP11797b) immunohistochemistry analysis in formalin fixed and paraffin embedded human kidney tissue followed by peroxidase conjugation of the secondary antibody and DAB staining. This data demonstrates the use of SHISA3 Antibody (C-term) for immunohistochemistry. Clinical relevance has not been evaluated.

Please note: All products are 'FOR RESEARCH USE ONLY. NOT FOR USE IN DIAGNOSTIC OR THERAPEUTIC PROCEDURES'.