

## tcag7.1227 Antibody (Center)

Affinity Purified Rabbit Polyclonal Antibody (Pab)

Catalog # AP11841c

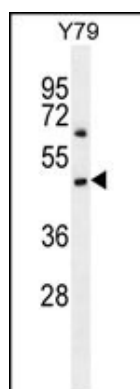
### Product Information

Application	WB, E
Other Accession	<a href="#">XP_001714453.2</a>
Reactivity	Human
Host	Rabbit
Clonality	Polyclonal
Isotype	Rabbit IgG
Clone Names	RB29895
Antigen Region	183-211

### Additional Information

Target/Specificity	This tcag7.1227 antibody is generated from rabbits immunized with a KLH conjugated synthetic peptide between 183-211 amino acids from the Central region of human tcag7.1227.
Dilution	WB~~1:1000 E~~Use at an assay dependent concentration.
Format	Purified polyclonal antibody supplied in PBS with 0.09% (W/V) sodium azide. This antibody is purified through a protein A column, followed by peptide affinity purification.
Storage	Maintain refrigerated at 2-8°C for up to 2 weeks. For long term storage store at -20°C in small aliquots to prevent freeze-thaw cycles.
Precautions	tcag7.1227 Antibody (Center) is for research use only and not for use in diagnostic or therapeutic procedures.

### Images



tcag7.1227 Antibody (Center) (Cat. #AP11841c) western blot analysis in Y79 cell line lysates (35ug/lane). This demonstrates the tcag7.1227 antibody detected the tcag7.1227 protein (arrow).

Please note: All products are 'FOR RESEARCH USE ONLY. NOT FOR USE IN DIAGNOSTIC OR THERAPEUTIC PROCEDURES'.