

ROPN1L Antibody (N-term)

Affinity Purified Rabbit Polyclonal Antibody (Pab)

Catalog # AP11844a

Product Information

Application	WB, IHC-P, E
Primary Accession	Q96C74
Other Accession	Q9EQ00 , Q4R760 , Q3T024 , NP_114122.2
Reactivity	Human, Mouse
Predicted	Bovine, Monkey
Host	Rabbit
Clonality	Polyclonal
Isotype	Rabbit IgG
Clone Names	RB30169
Calculated MW	26107
Antigen Region	32-60

Additional Information

Gene ID	83853
Other Names	Ropporin-1-like protein, ROPN1-like protein, AKAP-associated sperm protein, ROPN1L, ASP
Target/Specificity	This ROPN1L antibody is generated from rabbits immunized with a KLH conjugated synthetic peptide between 32-60 amino acids from the N-terminal region of human ROPN1L.
Dilution	WB~~1:1000 IHC-P~~1:100~500 E~~Use at an assay dependent concentration.
Format	Purified polyclonal antibody supplied in PBS with 0.09% (W/V) sodium azide. This antibody is purified through a protein A column, followed by peptide affinity purification.
Storage	Maintain refrigerated at 2-8°C for up to 2 weeks. For long term storage store at -20°C in small aliquots to prevent freeze-thaw cycles.
Precautions	ROPN1L Antibody (N-term) is for research use only and not for use in diagnostic or therapeutic procedures.

Protein Information

Name	ROPN1L
Synonyms	ASP, RSPH11 {ECO:0000303 PubMed:27120127}

Function	Functions as part of axonemal radial spoke complexes that play an important part in the motility of sperm and cilia. Important for male fertility. With ROPN1, involved in fibrous sheath integrity and sperm motility, plays a role in PKA-dependent signaling processes required for spermatozoa capacitation.
Cellular Location	Cell projection, cilium, flagellum {ECO:0000250 UniProtKB:Q9EQ00}. Cell projection, cilium

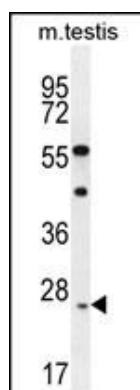
Background

The protein encoded by this gene is a sperm protein, which interacts with A-kinase anchoring protein, AKAP3, through the amphipathic helix region of AKAP3. Type II regulatory subunit of cAMP-dependent protein kinase (PKARII) also binds to this helix domain of AKAP3, which allows PKARII to be targeted to specific subcellular compartments. It is suggested that sperm contains several proteins that bind to AKAPs in a manner similar to PKARII, and this encoded protein may be one of them.

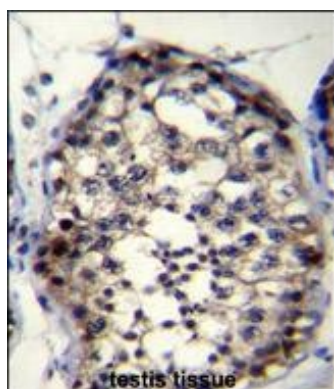
References

Carr, D.W., et al. J. Biol. Chem. 276(20):17332-17338(2001)

Images



ROPN1L Antibody (N-term) (Cat. #AP11844a) western blot analysis in mouse testis tissue lysates (35ug/lane). This demonstrates the ROPN1L antibody detected the ROPN1L protein (arrow).



ROPN1L Antibody (N-term) (Cat. #AP11844a) immunohistochemistry analysis in formalin fixed and paraffin embedded human testis tissue followed by peroxidase conjugation of the secondary antibody and DAB staining. This data demonstrates the use of ROPN1L Antibody (N-term) for immunohistochemistry. Clinical relevance has not been evaluated.

Please note: All products are 'FOR RESEARCH USE ONLY. NOT FOR USE IN DIAGNOSTIC OR THERAPEUTIC PROCEDURES'.