

PELP1 Antibody (Center R759)

Affinity Purified Rabbit Polyclonal Antibody (Pab)

Catalog # AP11872c

Product Information

Application	WB, IHC-P, E
Primary Accession	Q8IZL8
Other Accession	Q56B11 , Q9DBD5 , NP_055204
Reactivity	Human, Rat, Mouse
Predicted	Rat
Host	Rabbit
Clonality	Polyclonal
Isotype	Rabbit IgG
Clone Names	RB17558
Calculated MW	119700
Antigen Region	744-771

Additional Information

Gene ID	27043
Other Names	Proline-, glutamic acid- and leucine-rich protein 1, Modulator of non-genomic activity of estrogen receptor, Transcription factor HMX3, PELP1, HMX3, MNAR
Target/Specificity	This PELP1 antibody is generated from rabbits immunized with a KLH conjugated synthetic peptide between 744-771 amino acids from the Central region of human PELP1.
Dilution	WB~~1:1000-1:2000 IHC-P~~1:100~500 E~~Use at an assay dependent concentration.
Format	Purified polyclonal antibody supplied in PBS with 0.09% (W/V) sodium azide. This antibody is purified through a protein A column, followed by peptide affinity purification.
Storage	Maintain refrigerated at 2-8°C for up to 2 weeks. For long term storage store at -20°C in small aliquots to prevent freeze-thaw cycles.
Precautions	PELP1 Antibody (Center R759) is for research use only and not for use in diagnostic or therapeutic procedures.

Protein Information

Name	PELP1
Synonyms	HMX3, MNAR

Function	Coactivator of estrogen receptor-mediated transcription and a corepressor of other nuclear hormone receptors and sequence-specific transcription factors (PubMed: 14963108). Plays a role in estrogen receptor (ER) genomic activity when present in the nuclear compartment by activating the ER target genes in a hormonal stimulation dependent manner. Can facilitate ER non-genomic signaling via SRC and PI3K interaction in the cytosol. Plays a role in E2-mediated cell cycle progression by interacting with RB1. May have important functional implications in ER/growth factor cross-talk. Interacts with several growth factor signaling components including EGFR and HRS. Functions as the key stabilizing component of the Five Friends of Methylated CHTOP (5FMC) complex; the 5FMC complex is recruited to ZNF148 by methylated CHTOP, leading to desumoylation of ZNF148 and subsequent transactivation of ZNF148 target genes. Component of the PELP1 complex involved in the nucleolar steps of 28S rRNA maturation and the subsequent nucleoplasmic transit of the pre-60S ribosomal subunit. Regulates pre-60S association of the critical remodeling factor MDN1 (PubMed: 21326211). May promote tumorigenesis via its interaction with and modulation of several oncogenes including SRC, PI3K, STAT3 and EGFR. Plays a role in cancer cell metastasis via its ability to modulate E2-mediated cytoskeleton changes and cell migration via its interaction with SRC and PI3K.
Cellular Location	Nucleus, nucleolus. Nucleus, nucleoplasm. Nucleus. Cytoplasm Note=Mainly found in the nucleoplasm, with low levels detected in the cytoplasm (By similarity). Also found associated with the plasma membrane. Mainly in cytoplasm in a subset of breast tumors Localization is widely deregulated in endometrial cancers with predominantly cytoplasm localization in high-grade endometrial tumors (PubMed:16140940). {ECO:0000250 UniProtKB:Q9DBD5, ECO:0000269 PubMed:16140940}
Tissue Location	Widely expressed..

Background

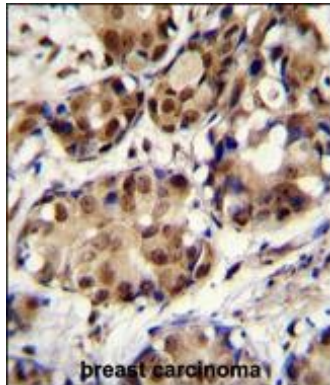
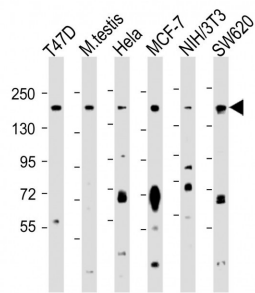
PELP1 is a coactivator of estrogen receptor (see ESR1; MIM 133430)-mediated transcription and a corepressor of other nuclear hormone receptors and sequence-specific transcription factors (Choi et al., 2004 [PubMed 15456770]).

References

Nair, S.S., et al. EMBO Rep. 11(6):438-444(2010)
Habashy, H.O., et al. Breast Cancer Res. Treat. 120(3):603-612(2010)
Vadlamudi, R.K., et al. J. Steroid Biochem. Mol. Biol. 118 (4-5), 211-218 (2010) :
Tzelepi, V., et al. Virchows Arch. 454(1):41-53(2009)
Grivas, P.D., et al. Cell. Oncol. 31(3):235-247(2009)

Images

All lanes : Anti-PELP1 Antibody (Center R759) at 1:1000 dilution Lane 1: T47D whole cell lysate Lane 2: mouse testis lysate Lane 3: Hela whole cell lysate Lane 4: MCF-7 whole cell lysate Lane 5: NIH/3T3 whole cell lysate Lane 6: SW620 whole cell lysate Lysates/proteins at 20 µg per lane. Secondary Goat Anti-Rabbit IgG, (H+L), Peroxidase conjugated at 1/10000 dilution. Predicted band size : 120 kDa Blocking/Dilution buffer: 5% NFD/MTBST.



PELP1 Antibody (Center R759) (Cat. #AP11872c) immunohistochemistry analysis in formalin fixed and paraffin embedded human breast carcinoma followed by peroxidase conjugation of the secondary antibody and DAB staining. This data demonstrates the use of PELP1 Antibody (Center R759) for immunohistochemistry. Clinical relevance has not been evaluated.

Please note: All products are 'FOR RESEARCH USE ONLY. NOT FOR USE IN DIAGNOSTIC OR THERAPEUTIC PROCEDURES'.