

# TBC1D13 Antibody (Center)

Affinity Purified Rabbit Polyclonal Antibody (Pab)

Catalog # AP11876c

## Product Information

---

<b>Application</b>	WB, IHC-P, IF, E
<b>Primary Accession</b>	<a href="#">Q9NVG8</a>
<b>Other Accession</b>	<a href="#">NP_060671</a>
<b>Reactivity</b>	Human, Rat, Mouse
<b>Host</b>	Rabbit
<b>Clonality</b>	Polyclonal
<b>Isotype</b>	Rabbit IgG
<b>Clone Names</b>	RB19886
<b>Calculated MW</b>	46554
<b>Antigen Region</b>	76-105

## Additional Information

---

<b>Gene ID</b>	54662
<b>Other Names</b>	TBC1 domain family member 13, TBC1D13
<b>Target/Specificity</b>	This TBC1D13 antibody is generated from rabbits immunized with a KLH conjugated synthetic peptide between 76-105 amino acids from the Central region of human TBC1D13.
<b>Dilution</b>	WB~~1:500 IHC-P~~1:100~500 IF~~1:10~50 E~~Use at an assay dependent concentration.
<b>Format</b>	Purified polyclonal antibody supplied in PBS with 0.05% (V/V) Proclin 300. This antibody is purified through a protein A column, followed by peptide affinity purification.
<b>Storage</b>	Maintain refrigerated at 2-8°C for up to 2 weeks. For long term storage store at -20°C in small aliquots to prevent freeze-thaw cycles.
<b>Precautions</b>	TBC1D13 Antibody (Center) is for research use only and not for use in diagnostic or therapeutic procedures.

## Protein Information

---

<b>Name</b>	TBC1D13
<b>Function</b>	Acts as a GTPase-activating protein for RAB35. Together with RAB35 may be involved in regulation of insulin-induced glucose transporter SLC2A4/GLUT4 translocation to the plasma membrane in adipocytes.

Cellular Location	Membrane {ECO:0000250 UniProtKB:Q8R3D1}. Cytoplasm {ECO:0000250 UniProtKB:Q8R3D1}
-------------------	---

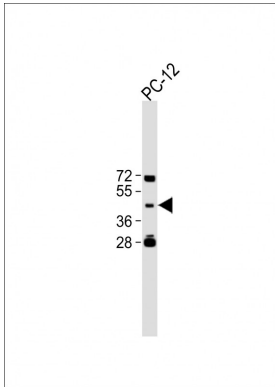
## Background

TBC1D13 may act as a GTPase-activating protein for Rab family protein(s).

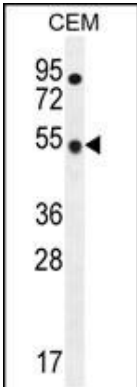
## References

Ishibashi, K., et al. Genes Cells 14(1):41-52(2009)

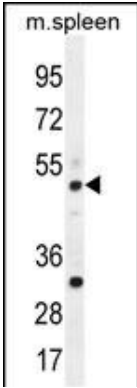
## Images



All lanes : Anti-TBC1D13 Antibody (Center) at 1:500 dilution Lane 1:PC-12 whole cell lysate Lysates/proteins at 20 µg per lane. Secondary Goat Anti-Rabbit IgG, (H+L), Peroxidase conjugated (ASP1615) at 1/15000 dilution. Observed band size : 47kDa Blocking/Dilution buffer: 5% NFDm/TBST.

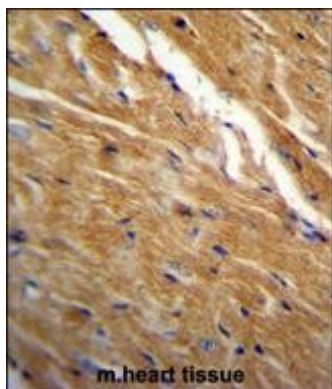


TBC1D13 Antibody (Center) (Cat. #AP11876c) western blot analysis in CEM cell line lysates (35ug/lane).This demonstrates the TBC1D13 antibody detected the TBC1D13 protein (arrow).

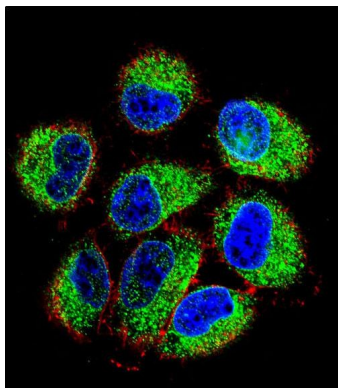


TBC1D13 Antibody (Center) (Cat. #AP11876c) western blot analysis in mouse spleen tissue lysates (35ug/lane).This demonstrates the TBC1D13 antibody detected the TBC1D13 protein (arrow).

TBC1D13 Antibody (Center) (Cat. #AP11876c)immunohistochemistry analysis in formalin fixed and paraffin embedded mouse heart tissue followed by peroxidase conjugation of the secondary antibody and DAB staining.This data demonstrates the



use of TBC1D13 Antibody (Center) for immunohistochemistry. Clinical relevance has not been evaluated.



Confocal immunofluorescent analysis of TBC1D13 Antibody (Center)(Cat#AP11876c) with NCI-H460 cell followed by Alexa Fluor 488-conjugated goat anti-rabbit IgG (green). Actin filaments have been labeled with Alexa Fluor 555 phalloidin (red).DAPI was used to stain the cell nuclear (blue).

Please note: All products are 'FOR RESEARCH USE ONLY. NOT FOR USE IN DIAGNOSTIC OR THERAPEUTIC PROCEDURES'.