

GPM6B Antibody (N-term)

Affinity Purified Rabbit Polyclonal Antibody (Pab)

Catalog # AP11878a

Product Information

Application	WB, FC, E
Primary Accession	Q13491
Other Accession	Q9JJK1 , NP_005269
Reactivity	Human
Predicted	Rat
Host	Rabbit
Clonality	Polyclonal
Isotype	Rabbit IgG
Clone Names	RB20077
Calculated MW	28989
Antigen Region	1-30

Additional Information

Gene ID	2824
Other Names	Neuronal membrane glycoprotein M6-b, M6b, GPM6B, M6B
Target/Specificity	This GPM6B antibody is generated from rabbits immunized with a KLH conjugated synthetic peptide between 1-30 amino acids from the N-terminal region of human GPM6B.
Dilution	WB~~1:1000 FC~~1:10~50 E~~Use at an assay dependent concentration.
Format	Purified polyclonal antibody supplied in PBS with 0.05% (V/V) Proclin 300. This antibody is purified through a protein A column, followed by peptide affinity purification.
Storage	Maintain refrigerated at 2-8°C for up to 2 weeks. For long term storage store at -20°C in small aliquots to prevent freeze-thaw cycles.
Precautions	GPM6B Antibody (N-term) is for research use only and not for use in diagnostic or therapeutic procedures.

Protein Information

Name	GPM6B
Synonyms	M6B
Function	May be involved in neural development. Involved in regulation of osteoblast

function and bone formation. Involved in matrix vesicle release by osteoblasts; this function seems to involve maintenance of the actin cytoskeleton. May be involved in cellular trafficking of SERT and thereby in regulation of serotonin uptake.

Cellular Location	Cell membrane; Multi-pass membrane protein. Note=Colocalizes with SERT at the plasma membrane.
Tissue Location	Neurons and glia; cerebellar Bergmann glia, in glia within white matter tracts of the cerebellum and cerebrum, and in embryonic dorsal root ganglia

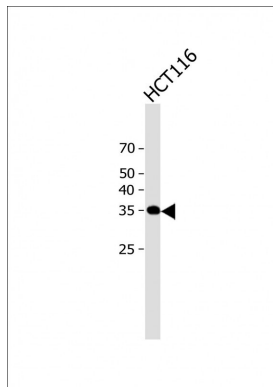
Background

This gene encodes a membrane glycoprotein that belongs to the proteolipid protein family. Proteolipid protein family members are expressed in most brain regions and are thought to be involved in cellular housekeeping functions, such as membrane trafficking and cell-to-cell communication.

References

Fjorback, A.W., et al. J. Mol. Neurosci. 37(3):191-200(2009)
Sebastiani, P., et al. Am. J. Hematol. 83(3):189-195(2008)
Combes, P., et al. Neurogenetics 7(1):31-37(2006)
Henneke, M., et al. Am. J. Med. Genet. A 128A (2), 156-158 (2004) :
Werner, H., et al. Mol. Cell. Neurosci. 18(6):593-605(2001)

Images



All lanes: Anti-GPM6B Antibody (N-term) at 1:2000 dilution + HCT116 whole cell lysate Lysates/proteins at 20 µg per lane. Secondary: Goat Anti-Rabbit IgG, (H+L), Peroxidase conjugated (ASP1615) at 1/15000 dilution. Observed band size: 33 KDa Blocking/Dilution buffer: 5% NFDM/TBST.

Please note: All products are 'FOR RESEARCH USE ONLY. NOT FOR USE IN DIAGNOSTIC OR THERAPEUTIC PROCEDURES'.