

# WDR42C Antibody (N-term)

Affinity Purified Rabbit Polyclonal Antibody (Pab)

Catalog # AP11900a

## Product Information

---

<b>Application</b>	IHC-P, IF, WB, E
<b>Primary Accession</b>	<a href="#">P0C7V8</a>
<b>Reactivity</b>	Human
<b>Host</b>	Rabbit
<b>Clonality</b>	Polyclonal
<b>Isotype</b>	Rabbit IgG
<b>Clone Names</b>	RB29744
<b>Calculated MW</b>	71191
<b>Antigen Region</b>	112-140

## Additional Information

---

<b>Gene ID</b>	347442
<b>Other Names</b>	DDB1- and CUL4-associated factor 8-like protein 2, WD repeat-containing protein 42C, DCAF8L2, WDR42C
<b>Target/Specificity</b>	This WDR42C antibody is generated from rabbits immunized with a KLH conjugated synthetic peptide between 112-140 amino acids from the N-terminal region of human WDR42C.
<b>Dilution</b>	IHC-P~~1:100~500 IF~~1:10~50 WB~~1:1000 E~~Use at an assay dependent concentration.
<b>Format</b>	Purified polyclonal antibody supplied in PBS with 0.09% (W/V) sodium azide. This antibody is purified through a protein A column, followed by peptide affinity purification.
<b>Storage</b>	Maintain refrigerated at 2-8°C for up to 2 weeks. For long term storage store at -20°C in small aliquots to prevent freeze-thaw cycles.
<b>Precautions</b>	WDR42C Antibody (N-term) is for research use only and not for use in diagnostic or therapeutic procedures.

## Protein Information

---

<b>Name</b>	DCAF8L2
<b>Synonyms</b>	WDR42C

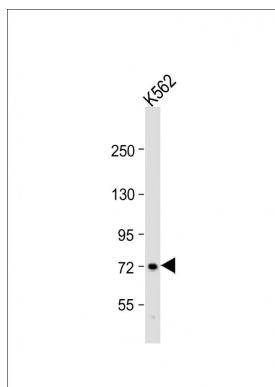
## Background

---

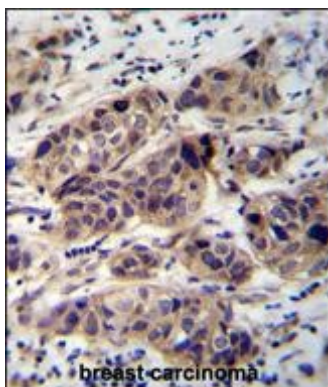
The function of this protein remains unknown.

## Images

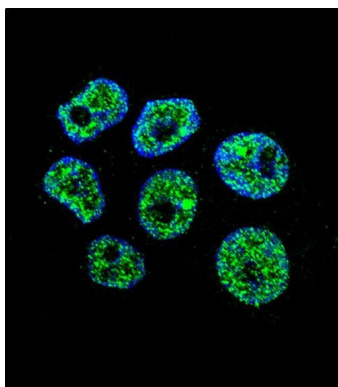
---



Anti-WDR42C Antibody (N-term) at 1:1000 dilution + K562 whole cell lysate Lysates/proteins at 20 µg per lane. Secondary Goat Anti-Rabbit IgG, (H+L), Peroxidase conjugated at 1/10000 dilution. Predicted band size : 71 kDa Blocking/Dilution buffer: 5% NFDM/TBST.



WDR42C Antibody (N-term) (Cat. #AP11900a) immunohistochemistry analysis in formalin fixed and paraffin embedded human breast carcinoma followed by peroxidase conjugation of the secondary antibody and DAB staining. This data demonstrates the use of WDR42C Antibody (N-term) for immunohistochemistry. Clinical relevance has not been evaluated.



Confocal immunofluorescent analysis of WDR42C Antibody (N-term) (Cat#AP11900a) with ZR-75-1 cell followed by Alexa Fluor 488-conjugated goat anti-rabbit IgG (green). DAPI was used to stain the cell nuclear (blue).

Please note: All products are 'FOR RESEARCH USE ONLY. NOT FOR USE IN DIAGNOSTIC OR THERAPEUTIC PROCEDURES'.