

SH2D4B Antibody (C-term)

Affinity Purified Rabbit Polyclonal Antibody (Pab)

Catalog # AP11902b

Product Information

Application	WB, IHC-P, IF, E
Primary Accession	Q5SQS7
Other Accession	NP_997255.2
Reactivity	Human
Host	Rabbit
Clonality	Polyclonal
Isotype	Rabbit IgG
Clone Names	RB29757
Calculated MW	51232
Antigen Region	374-402

Additional Information

Gene ID	387694
Other Names	SH2 domain-containing protein 4B, SH2D4B
Target/Specificity	This SH2D4B antibody is generated from rabbits immunized with a KLH conjugated synthetic peptide between 374-402 amino acids from the C-terminal region of human SH2D4B.
Dilution	WB~~1:1000 IHC-P~~1:100~500 IF~~1:10~50 E~~Use at an assay dependent concentration.
Format	Purified polyclonal antibody supplied in PBS with 0.09% (W/V) sodium azide. This antibody is purified through a protein A column, followed by peptide affinity purification.
Storage	Maintain refrigerated at 2-8°C for up to 2 weeks. For long term storage store at -20°C in small aliquots to prevent freeze-thaw cycles.
Precautions	SH2D4B Antibody (C-term) is for research use only and not for use in diagnostic or therapeutic procedures.

Protein Information

Name	SH2D4B
------	--------

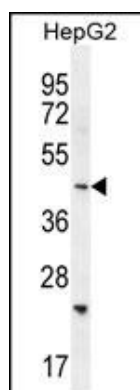
Background

The function of this protein remains unknown.

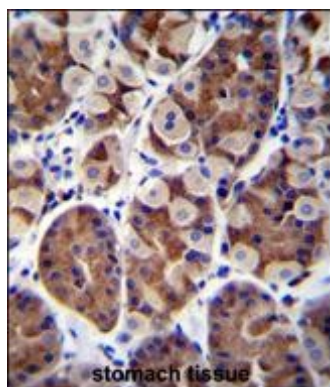
References

Rose, J. Phd, et al. Mol. Med. (2010) In press :

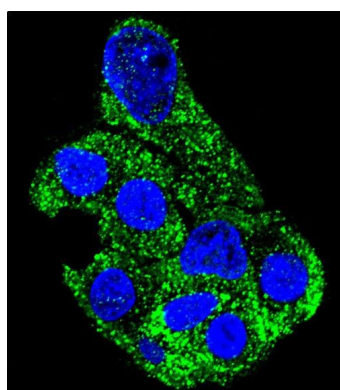
Images



SH2D4B Antibody (C-term) (Cat. #AP11902b) western blot analysis in HepG2 cell line lysates (35ug/lane). This demonstrates the SH2D4B antibody detected the SH2D4B protein (arrow).



SH2D4B Antibody (C-term) (Cat. #AP11902b) immunohistochemistry analysis in formalin fixed and paraffin embedded human stomach tissue followed by peroxidase conjugation of the secondary antibody and DAB staining. This data demonstrates the use of SH2D4B Antibody (C-term) for immunohistochemistry. Clinical relevance has not been evaluated.



Confocal immunofluorescent analysis of SH2D4B Antibody (C-term) (Cat#AP11902b) with HepG2 cell followed by Alexa Fluor 488-conjugated goat anti-rabbit IgG (green). DAPI was used to stain the cell nuclear (blue).

Please note: All products are 'FOR RESEARCH USE ONLY. NOT FOR USE IN DIAGNOSTIC OR THERAPEUTIC PROCEDURES'.