

# LOC147646 Antibody (C-term)

Affinity Purified Rabbit Polyclonal Antibody (Pab)

Catalog # AP11909b

## Product Information

---

Application	WB, E
Primary Accession	<a href="#">G1R1R7</a>
Other Accession	<a href="#">NP_001180552</a>
Reactivity	Human
Host	Rabbit
Clonality	Polyclonal
Isotype	Rabbit IgG
Clone Names	RB29879
Calculated MW	19687
Antigen Region	147-176

## Additional Information

---

Other Names	hypothetical protein LOC147646
Target/Specificity	This LOC147646 antibody is generated from rabbits immunized with a KLH conjugated synthetic peptide between 147-176 amino acids from the C-terminal region of human LOC147646.
Dilution	WB~~1:1000 E~~Use at an assay dependent concentration.
Format	Purified polyclonal antibody supplied in PBS with 0.09% (W/V) sodium azide. This antibody is purified through a protein A column, followed by peptide affinity purification.
Storage	Maintain refrigerated at 2-8°C for up to 2 weeks. For long term storage store at -20°C in small aliquots to prevent freeze-thaw cycles.
Precautions	LOC147646 Antibody (C-term) is for research use only and not for use in diagnostic or therapeutic procedures.

## Protein Information

---

Name	C19orf84 {ECO:0000313 Ensembl:ENSNLEP000000007139.1}
------	--

## Background

---

The function of this protein remains unknown.

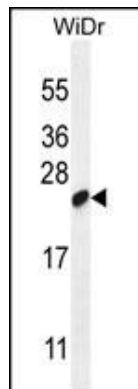
## References

---

Strausberg, R.L., et al. Proc. Natl. Acad. Sci. U.S.A. 99(26):16899-16903(2002)

## Images

---



LOC147646 Antibody (C-term) (Cat. #AP11909b) western blot analysis in WiDr cell line lysates (35ug/lane). This demonstrates the LOC147646 antibody detected the LOC147646 protein (arrow).

Please note: All products are 'FOR RESEARCH USE ONLY. NOT FOR USE IN DIAGNOSTIC OR THERAPEUTIC PROCEDURES'.