

OTOP3 Antibody (C-term)

Affinity Purified Rabbit Polyclonal Antibody (Pab)

Catalog # AP11912b

Product Information

Application	WB, FC, E
Primary Accession	Q7RTS5
Other Accession	Q80UF9 , NP_839947.1
Reactivity	Human, Rat, Mouse
Predicted	Mouse
Host	Rabbit
Clonality	Polyclonal
Isotype	Rabbit IgG
Clone Names	RB29910
Calculated MW	66296
Antigen Region	536-564

Additional Information

Gene ID	347741
Other Names	Otopetrin-3, OTOP3
Target/Specificity	This OTOP3 antibody is generated from rabbits immunized with a KLH conjugated synthetic peptide between 536-564 amino acids from the C-terminal region of human OTOP3.
Dilution	WB~~1:1000 FC~~1:10~50 E~~Use at an assay dependent concentration.
Format	Purified polyclonal antibody supplied in PBS with 0.09% (W/V) sodium azide. This antibody is purified through a protein A column, followed by peptide affinity purification.
Storage	Maintain refrigerated at 2-8°C for up to 2 weeks. For long term storage store at -20°C in small aliquots to prevent freeze-thaw cycles.
Precautions	OTOP3 Antibody (C-term) is for research use only and not for use in diagnostic or therapeutic procedures.

Protein Information

Name	OTOP3 {ECO:0000303 PubMed:12651873, ECO:0000312 HGNC:HGNC:19658}
Function	Proton-selective channel gated by extracellular protons.

Cellular Location

Cell membrane {ECO:0000250|UniProtKB:Q80UF9}; Multi-pass membrane protein {ECO:0000250|UniProtKB:A9JTM7}

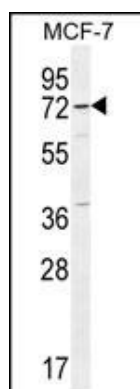
Background

OTOP3 belongs to the otopetrin family.

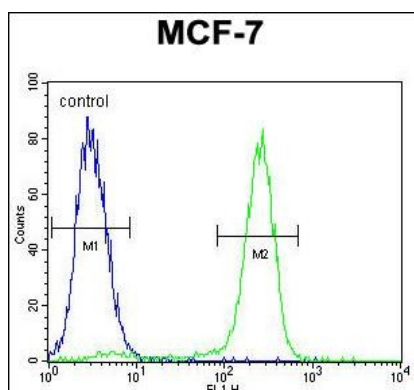
References

Hurle, B., et al. Hum. Mol. Genet. 12(7):777-789(2003)

Images



OTOP3 Antibody (C-term) (Cat. #AP11912b) western blot analysis in MCF-7 cell line lysates (35ug/lane). This demonstrates the OTOP3 antibody detected the OTOP3 protein (arrow).



OTOP3 Antibody (C-term) (Cat. #AP11912b) flow cytometric analysis of MCF-7 cells (right histogram) compared to a negative control cell (left histogram). FITC-conjugated goat-anti-rabbit secondary antibodies were used for the analysis.

Please note: All products are 'FOR RESEARCH USE ONLY. NOT FOR USE IN DIAGNOSTIC OR THERAPEUTIC PROCEDURES'.