

# PABPN1L Antibody (Center)

Affinity Purified Rabbit Polyclonal Antibody (Pab)

Catalog # AP11914c

## Product Information

---

<b>Application</b>	IHC-P, IF, FC, WB, E
<b>Primary Accession</b>	<a href="#">A6NDY0</a>
<b>Other Accession</b>	<a href="#">B0BNE4</a> , <a href="#">Q5XFR0</a> , <a href="#">Q6TY21</a> , <a href="#">Q804A5</a> , <a href="#">NP_001073956</a>
<b>Reactivity</b>	Human
<b>Predicted</b>	Xenopus, Mouse, Rat
<b>Host</b>	Rabbit
<b>Clonality</b>	Polyclonal
<b>Isotype</b>	Rabbit IgG
<b>Clone Names</b>	RB29922
<b>Calculated MW</b>	30386
<b>Antigen Region</b>	166-194

## Additional Information

---

<b>Gene ID</b>	390748
<b>Other Names</b>	Embryonic polyadenylate-binding protein 2, Embryonic poly(A)-binding protein 2, ePABP-2, ePABP2, Embryonic poly(A)-binding protein type II, Poly(A)-binding protein nuclear-like 1, PABPN1L, EPABP2, PABPNL1
<b>Target/Specificity</b>	This PABPN1L antibody is generated from rabbits immunized with a KLH conjugated synthetic peptide between 166-194 amino acids from the Central region of human PABPN1L.
<b>Dilution</b>	IHC-P~~1:100~500 IF~~1:10~50 FC~~1:10~50 WB~~1:1000 E~~Use at an assay dependent concentration.
<b>Format</b>	Purified polyclonal antibody supplied in PBS with 0.09% (W/V) sodium azide. This antibody is purified through a protein A column, followed by peptide affinity purification.
<b>Storage</b>	Maintain refrigerated at 2-8°C for up to 2 weeks. For long term storage store at -20°C in small aliquots to prevent freeze-thaw cycles.
<b>Precautions</b>	PABPN1L Antibody (Center) is for research use only and not for use in diagnostic or therapeutic procedures.

## Protein Information

---

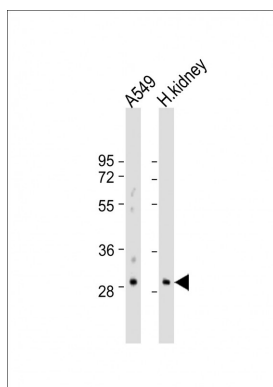
<b>Name</b>	PABPN1L
-------------	---------

<b>Synonyms</b>	EPABP2, PABPNL1
<b>Function</b>	Binds the poly(A) tail of mRNA.
<b>Cellular Location</b>	Cytoplasm.
<b>Tissue Location</b>	Expressed in various adult tissues.

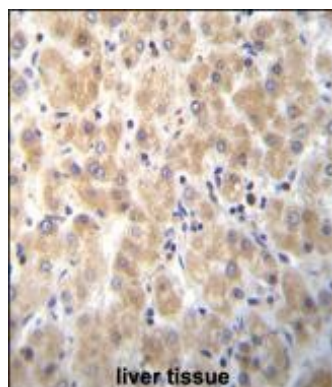
## Background

The function of this protein remains unknown.

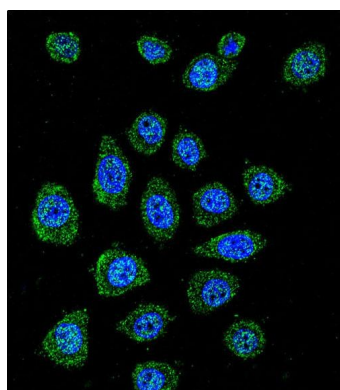
## Images



All lanes : Anti-PABPN1L Antibody (Center) at 1:500-1:1000 dilution Lane 1: A549 whole cell lysate Lane 2: human kidney lysate Lysates/proteins at 20 µg per lane. Secondary Goat Anti-Rabbit IgG, (H+L), Peroxidase conjugated at 1/10000 dilution. Predicted band size : 30 kDa Blocking/Dilution buffer: 5% NFDM/TBST.

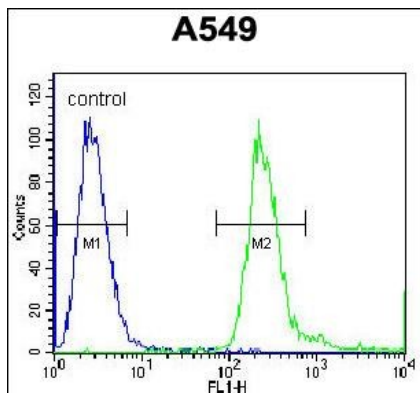


PABPN1L Antibody (Center) (Cat. #AP11914c) immunohistochemistry analysis in formalin fixed and paraffin embedded human liver tissue followed by peroxidase conjugation of the secondary antibody and DAB staining. This data demonstrates the use of PABPN1L Antibody (Center) for immunohistochemistry. Clinical relevance has not been evaluated.



Confocal immunofluorescent analysis of PABPN1L Antibody (Center) (Cat. #AP11914c) with A549 cell followed by Alexa Fluor 488-conjugated goat anti-rabbit IgG (green). DAPI was used to stain the cell nuclear (blue).

PABPN1L Antibody (Center) (Cat. #AP11914c) flow cytometric analysis of A549 cells (right histogram) compared to a negative control cell (left histogram). FITC-conjugated goat-anti-rabbit secondary antibodies were used for the analysis.



Please note: All products are 'FOR RESEARCH USE ONLY. NOT FOR USE IN DIAGNOSTIC OR THERAPEUTIC PROCEDURES'.