

# NKX1-1 Antibody (Center)

Affinity Purified Rabbit Polyclonal Antibody (Pab)

Catalog # AP11916c

## Product Information

---

Application	IF, WB, E
Primary Accession	<a href="#">Q15270</a>
Other Accession	<a href="#">XP_931434.4</a>
Reactivity	Human
Host	Rabbit
Clonality	Polyclonal
Isotype	Rabbit IgG
Calculated MW	44012
Antigen Region	1-1

## Additional Information

---

Gene ID	54729
Other Names	NK1 transcription factor-related protein 1, Homeobox protein 153, HPX-153, Homeobox protein SAX-2, NKX-11, NKX1-1, HPX153
Target/Specificity	This NKX1-1 antibody is generated from rabbits immunized with a KLH conjugated synthetic peptide between 230-258 amino acids from the Central region of human NKX1-1.
Dilution	IF~~1:10~50 WB~~1:1000 E~~Use at an assay dependent concentration.
Format	Purified polyclonal antibody supplied in PBS with 0.09% (W/V) sodium azide. This antibody is purified through a protein A column, followed by peptide affinity purification.
Storage	Maintain refrigerated at 2-8°C for up to 2 weeks. For long term storage store at -20°C in small aliquots to prevent freeze-thaw cycles.
Precautions	NKX1-1 Antibody (Center) is for research use only and not for use in diagnostic or therapeutic procedures.

## Protein Information

---

Name	NKX1-1 ( <a href="#">HGNC:24975</a> )
Function	May be required for the coordinated crosstalk of factors involved in the maintenance of energy homeostasis, possibly by regulating the transcription of specific factors involved in energy balance.

**Cellular Location**

Nucleus {ECO:0000255|PROSITE-ProRule:PRU00108}.

**Tissue Location**

Expressed in hemopoietic progenitor cells.

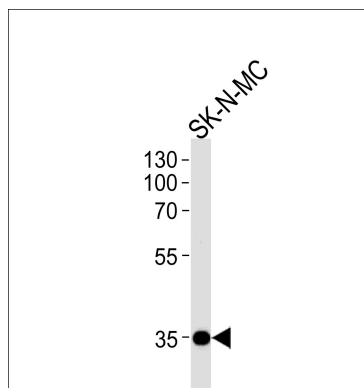
**Background**

---

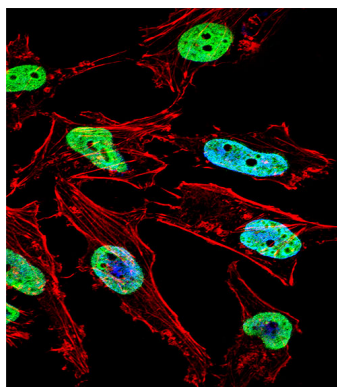
The function of this protein remains unknown.

**Images**

---



NKX1-1 Antibody (Center) (Cat. #AP11916c) western blot analysis in SK-N-MC cell line lysates (35ug/lane). This demonstrates the NKX1-1 antibody detected the NKX1-1 protein (arrow).



Fluorescent confocal image of HeLa cell stained with NKX1-1 Antibody (Center)(Cat#AP11916c). HeLa cells were fixed with 4% PFA (20 min), permeabilized with Triton X-100 (0.1%, 10 min), then incubated with NKX1-1 primary antibody (1:25, 1 h at 37°C). For secondary antibody, Alexa Fluor® 488 conjugated donkey anti-rabbit antibody (green) was used (1:400, 50 min at 37°C). Cytoplasmic actin was counterstained with Alexa Fluor® 555 (red) conjugated Phalloidin (7 units/ml, 1 h at 37°C). Nuclei were counterstained with DAPI (blue) (10 µg/ml, 10 min). NKX1-1 immunoreactivity is localized to Nucleus significantly.

Please note: All products are 'FOR RESEARCH USE ONLY. NOT FOR USE IN DIAGNOSTIC OR THERAPEUTIC PROCEDURES'.