

TUBB6 Antibody (Center)

Affinity Purified Rabbit Polyclonal Antibody (Pab)

Catalog # AP11928c

Product Information

Application	WB, E
Primary Accession	Q9BUF5
Other Accession	Q9D6F9 , Q4R4X8 , P04350 , Q3ZBU7 , NP_115914.1
Reactivity	Human
Predicted	Bovine, Monkey, Mouse
Host	Rabbit
Clonality	Polyclonal
Isotype	Rabbit IgG
Clone Names	RB31604
Calculated MW	49857
Antigen Region	139-166

Additional Information

Gene ID	84617
Other Names	Tubulin beta-6 chain, Tubulin beta class V, TUBB6
Target/Specificity	This TUBB6 antibody is generated from rabbits immunized with a KLH conjugated synthetic peptide between 139-166 amino acids from the Central region of human TUBB6.
Dilution	WB~~1:2000 E~~Use at an assay dependent concentration.
Format	Purified polyclonal antibody supplied in PBS with 0.05% (V/V) Proclin 300. This antibody is purified through a protein A column, followed by peptide affinity purification.
Storage	Maintain refrigerated at 2-8°C for up to 2 weeks. For long term storage store at -20°C in small aliquots to prevent freeze-thaw cycles.
Precautions	TUBB6 Antibody (Center) is for research use only and not for use in diagnostic or therapeutic procedures.

Protein Information

Name	TUBB6
Function	Tubulin is the major constituent of microtubules, a cylinder consisting of laterally associated linear protofilaments composed of alpha- and beta-tubulin heterodimers. Microtubules grow by the addition of GTP-tubulin

dimers to the microtubule end, where a stabilizing cap forms. Below the cap, tubulin dimers are in GDP-bound state, owing to GTPase activity of alpha-tubulin.

Cellular Location

Cytoplasm, cytoskeleton.

Tissue Location

Ubiquitous. Maximal expression in breast and lung, where it represents around 10% of all beta-tubulins. Largely decreased expression in most cancerous tissues.

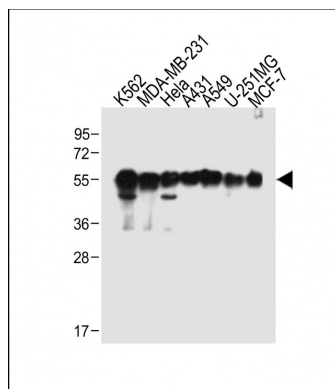
Background

Tubulin is the major constituent of microtubules. It binds two moles of GTP, one at an exchangeable site on the beta chain and one at a non-exchangeable site on the alpha-chain (By similarity).

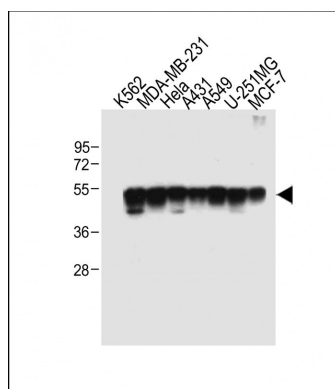
References

Leandro-Garcia, L.J., et al. Cytoskeleton (Hoboken) 67(4):214-223(2010)
Matsuoka, S., et al. Science 316(5828):1160-1166(2007)

Images

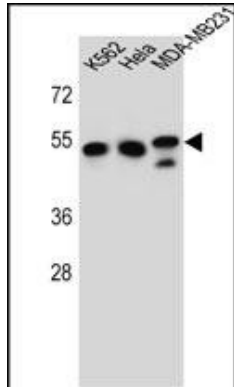
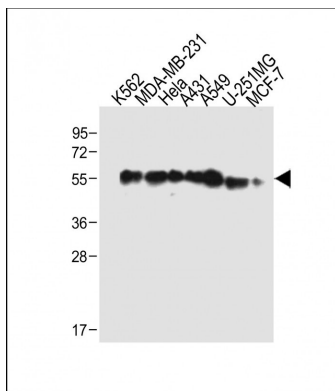


All lanes : Anti-TUBB6 Antibody (Center) at 1:2000 dilution
Lane 1: K562 whole cell lysate Lane 2: MDA-MB-231 whole cell lysate Lane 3: HeLa whole cell lysate Lane 4: A431 whole cell lysate Lane 5: A549 whole cell lysate Lane 6: U-251MG whole cell lysate Lane 7: MCF-7 whole cell lysate
Lysates/proteins at 20 µg per lane. Secondary Goat Anti-Rabbit IgG, (H+L), Peroxidase conjugated at 1/10000 dilution. Predicted band size : 50 kDa Blocking/Dilution buffer: 5% NFDM/TBST.



All lanes : Anti-TUBB6 Antibody (Center) at 1:2000 dilution
Lane 1: K562 whole cell lysate Lane 2: MDA-MB-231 whole cell lysate Lane 3: HeLa whole cell lysate Lane 4: A431 whole cell lysate Lane 5: A549 whole cell lysate Lane 6: U-251MG whole cell lysate Lane 7: MCF-7 whole cell lysate
Lysates/proteins at 20 µg per lane. Secondary Goat Anti-Rabbit IgG, (H+L), Peroxidase conjugated at 1/10000 dilution. Predicted band size : 50 kDa Blocking/Dilution buffer: 5% NFDM/TBST.

All lanes : Anti-TUBB6 Antibody (Center) at 1:2000 dilution
Lane 1: K562 whole cell lysate Lane 2: MDA-MB-231 whole cell lysate Lane 3: HeLa whole cell lysate Lane 4: A431 whole cell lysate Lane 5: A549 whole cell lysate Lane 6: U-251MG whole cell lysate Lane 7: MCF-7 whole cell lysate
Lysates/proteins at 20 µg per lane. Secondary Goat Anti-Rabbit IgG, (H+L), Peroxidase conjugated at 1/10000 dilution. Predicted band size : 50 kDa Blocking/Dilution buffer: 5% NFDM/TBST.



TUBB6 Antibody (Center) (Cat. #AP11928c) western blot analysis in K562, HeLa, MDA-MB231 cell line lysates (35ug/lane). This demonstrates the TUBB6 antibody detected the TUBB6 protein (arrow).

Please note: All products are 'FOR RESEARCH USE ONLY. NOT FOR USE IN DIAGNOSTIC OR THERAPEUTIC PROCEDURES'.