

TBB8B Antibody (C-term)

Affinity Purified Rabbit Polyclonal Antibody (Pab)

Catalog # AP11937b

Product Information

Application	WB, E
Primary Accession	A6NNZ2
Other Accession	A6NKZ8
Reactivity	Human
Host	Rabbit
Clonality	Polyclonal
Isotype	Rabbit IgG
Clone Names	RB31665
Calculated MW	49573
Antigen Region	320-347

Additional Information

Gene ID	260334
Other Names	Tubulin beta-8 chain-like protein LOC260334, TBB8L
Target/Specificity	This TBB8B antibody is generated from rabbits immunized with a KLH conjugated synthetic peptide between 320-347 amino acids from the C-terminal region of human TBB8B.
Dilution	WB~~1:1000 E~~Use at an assay dependent concentration.
Format	Purified polyclonal antibody supplied in PBS with 0.09% (W/V) sodium azide. This antibody is purified through a protein A column, followed by peptide affinity purification.
Storage	Maintain refrigerated at 2-8°C for up to 2 weeks. For long term storage store at -20°C in small aliquots to prevent freeze-thaw cycles.
Precautions	TBB8B Antibody (C-term) is for research use only and not for use in diagnostic or therapeutic procedures.

Protein Information

Name	TUBB8B (HGNC:24983)
Function	Tubulin is the major constituent of microtubules, a cylinder consisting of laterally associated linear protofilaments composed of alpha- and beta-tubulin heterodimers. Microtubules grow by the addition of GTP-tubulin dimers to the microtubule end, where a stabilizing cap forms. Below the cap,

tubulin dimers are in GDP-bound state, owing to GTPase activity of alpha-tubulin.

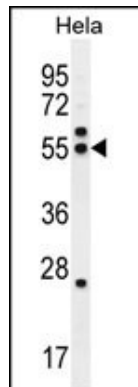
Cellular Location

Cytoplasm, cytoskeleton.

Background

Tubulin is the major constituent of microtubules. It binds two moles of GTP, one at an exchangeable site on the beta chain and one at a non-exchangeable site on the alpha-chain (By similarity).

Images



TBB8B Antibody (C-term) (Cat. #AP11937b) western blot analysis in HeLa cell line lysates (35ug/lane). This demonstrates the TBB8B antibody detected the TBB8B protein (arrow).

Please note: All products are 'FOR RESEARCH USE ONLY. NOT FOR USE IN DIAGNOSTIC OR THERAPEUTIC PROCEDURES'.