

# METTL2 Antibody (C-term)

Affinity Purified Rabbit Polyclonal Antibody (Pab)

Catalog # AP11952B

## Product Information

---

Application	WB, IHC-P, IF, E
Primary Accession	<a href="#">Q96IZ6</a>
Other Accession	<a href="#">Q8BMK1</a> , <a href="#">Q0P5B2</a> , <a href="#">Q6P1Q9</a> , <a href="#">A8KBL7</a> , <a href="#">NP_859076.3</a>
Reactivity	Human
Predicted	Zebrafish, Bovine, Mouse
Host	Rabbit
Clonality	Polyclonal
Isotype	Rabbit IgG
Clone Names	RB12378
Calculated MW	43537
Antigen Region	329-359

## Additional Information

---

Gene ID	339175
Other Names	Methyltransferase-like protein 2A, 211-, METTL2A, METTL2
Target/Specificity	This METTL2 antibody is generated from rabbits immunized with a KLH conjugated synthetic peptide between 329-359 amino acids from the C-terminal region of human METTL2.
Dilution	WB~~1:1000 IHC-P~~1:100~500 IF~~1:10~50 E~~Use at an assay dependent concentration.
Format	Purified polyclonal antibody supplied in PBS with 0.05% (V/V) Proclin 300. This antibody is purified through a protein A column, followed by peptide affinity purification.
Storage	Maintain refrigerated at 2-8°C for up to 2 weeks. For long term storage store at -20°C in small aliquots to prevent freeze-thaw cycles.
Precautions	METTL2 Antibody (C-term) is for research use only and not for use in diagnostic or therapeutic procedures.

## Protein Information

---

Name	METTL2A {ECO:0000303 PubMed:28655767, ECO:0000312 HGNC:HGNC:25755}
Function	S-adenosyl-L-methionine-dependent methyltransferase that mediates

N(3)-methylcytidine modification of residue 32 of the tRNA anticodon loop of tRNA(Thr)(UGU) and tRNA(Arg)(CCU) (PubMed:[28655767](#), PubMed:[34268557](#)). N(3)-methylcytidine methylation by METTL2A requires the N6-threonylcarbamoylation of tRNA (t6A37) by the EKC/KEOPS complex as prerequisite (PubMed:[34268557](#)).

**Cellular Location**                      Cytoplasm.

## Background

---

METTL2A is probable methyltransferase (By similarity).

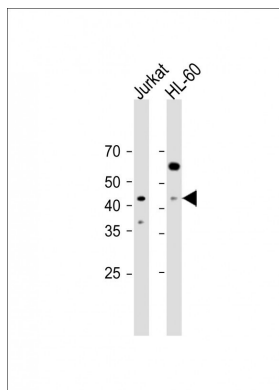
## References

---

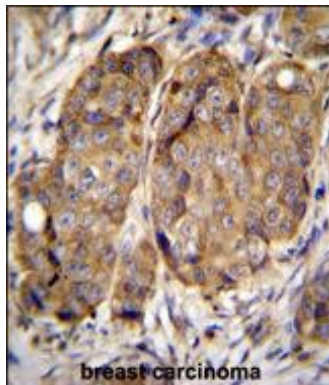
Zody, M.C., et al. Nature 440(7087):1045-1049(2006)

## Images

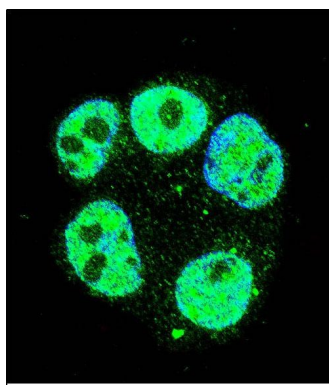
---



All lanes: Anti-METTL2 Antibody (C-term) at 1:500 dilution  
Lane 1: SH-SY5Y whole cell lysate Lane 2: MCF-7 whole cell lysate  
Lysates/proteins at 20 µg per lane. Secondary: Goat Anti-Rabbit IgG, (H+L), Peroxidase conjugated (ASP1615) at 1/15000 dilution. Observed band size: 43 KDa  
Blocking/Dilution buffer: 5% NFDM/TBST.



METTL2 Antibody (C-term) (Cat. #AP11952b) immunohistochemistry analysis in formalin fixed and paraffin embedded human breast carcinoma followed by peroxidase conjugation of the secondary antibody and DAB staining. This data demonstrates the use of METTL2 Antibody (C-term) for immunohistochemistry. Clinical relevance has not been evaluated.



Confocal immunofluorescent analysis of METTL2 Antibody (C-term) (Cat#AP11952b) with ZR-75-1 cell followed by Alexa Fluor 488-conjugated goat anti-rabbit IgG (green). DAPI was used to stain the cell nuclear (blue).

Please note: All products are 'FOR RESEARCH USE ONLY. NOT FOR USE IN DIAGNOSTIC OR THERAPEUTIC PROCEDURES'.