

EDN1 Antibody (C-term)

Affinity Purified Rabbit Polyclonal Antibody (Pab)

Catalog # AP11973b

Product Information

Application	IHC-P, WB, IF, E
Primary Accession	P05305
Other Accession	NP_001946
Reactivity	Human
Host	Rabbit
Clonality	Polyclonal
Isotype	Rabbit IgG
Clone Names	RB20657
Calculated MW	24425
Antigen Region	176-203

Additional Information

Gene ID	1906
Other Names	Endothelin-1, Preproendothelin-1, PPET1, Endothelin-1, ET-1, Big endothelin-1, EDN1
Target/Specificity	This EDN1 antibody is generated from rabbits immunized with a KLH conjugated synthetic peptide between 176-203 amino acids from the C-terminal region of human EDN1.
Dilution	IHC-P~~1:100~500 WB~~1:1000 IF~~1:10~50 E~~Use at an assay dependent concentration.
Format	Purified polyclonal antibody supplied in PBS with 0.09% (W/V) sodium azide. This antibody is purified through a protein A column, followed by peptide affinity purification.
Storage	Maintain refrigerated at 2-8°C for up to 2 weeks. For long term storage store at -20°C in small aliquots to prevent freeze-thaw cycles.
Precautions	EDN1 Antibody (C-term) is for research use only and not for use in diagnostic or therapeutic procedures.

Protein Information

Name	EDN1
Function	Endothelins are endothelium-derived vasoconstrictor peptides (By similarity). Probable ligand for G-protein coupled receptors EDNRA and

EDNRB which activates PTK2B, BCAR1, BCAR3 and, GTPases RAP1 and RHOA cascade in glomerular mesangial cells (PubMed:[19086031](#)). Also binds the DEAR/FBXW7-AS1 receptor (PubMed:[17446437](#)). Promotes mesenteric arterial wall remodeling via activation of ROCK signaling and subsequent colocalization of NFATC3 with F-actin filaments (By similarity). NFATC3 then translocates to the nucleus where it subsequently promotes the transcription of the smooth muscle hypertrophy and differentiation marker ACTA2 (By similarity).

Cellular Location

Secreted.

Tissue Location

Expressed in lung, placental stem villi vessels and in cultured placental vascular smooth muscle cells

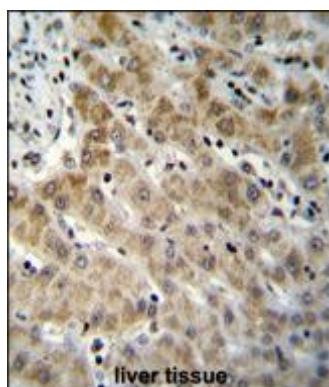
Background

The protein encoded by this gene is proteolytically processed to release a secreted peptide termed endothelin 1. This peptide is a potent vasoconstrictor and is produced by vascular endothelial cells. Endothelin 1 also can affect the central nervous system. Two transcript variants encoding different isoforms have been found for this gene.

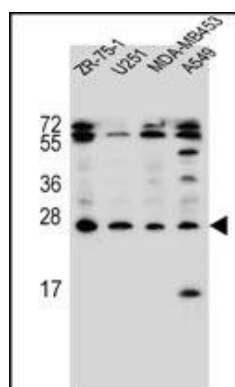
References

Gonsalves, C., et al. J. Immunol. 185(10):6253-6264(2010)
 Romero, R., et al. Am. J. Obstet. Gynecol. 203 (4), 361 (2010) :
 Feng, J., et al. Circulation 122 (11 SUPPL), S150-S155 (2010) :
 Nikopensius, T., et al. Birth Defects Res. Part A Clin. Mol. Teratol. 88(9):748-756(2010)
 Kaparianos, A., et al. Eur Rev Med Pharmacol Sci 14(8):705-719(2010)

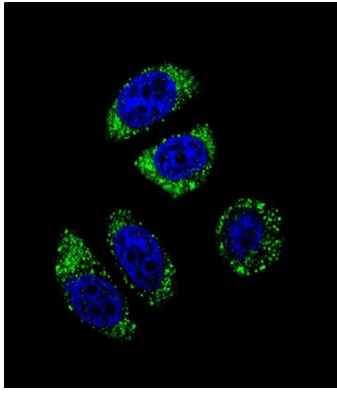
Images



EDN1 Antibody (C-term) (Cat. #AP11973b) immunohistochemistry analysis in formalin fixed and paraffin embedded human liver tissue followed by peroxidase conjugation of the secondary antibody and DAB staining. This data demonstrates the use of EDN1 Antibody (C-term) for immunohistochemistry. Clinical relevance has not been evaluated.



EDN1 Antibody (C-term) (Cat. #AP11973b) western blot analysis in ZR-75-1, U251, MDA-MB453, A549 cell line lysates (35ug/lane). This demonstrates the EDN1 antibody detected the EDN1 protein (arrow).



Confocal immunofluorescent analysis of EDN1 Antibody (C-term)(Cat#AP11973b) with A549 cell followed by Alexa Fluor 488-conjugated goat anti-rabbit IgG (green). DAPI was used to stain the cell nuclear (blue).

Please note: All products are 'FOR RESEARCH USE ONLY. NOT FOR USE IN DIAGNOSTIC OR THERAPEUTIC PROCEDURES'.