

# PSMAL Antibody (C-term)

Affinity Purified Rabbit Polyclonal Antibody (Pab)

Catalog # AP11974b

## Product Information

---

<b>Application</b>	WB, FC, E
<b>Primary Accession</b>	<a href="#">Q9HBA9</a>
<b>Other Accession</b>	<a href="#">NP_710163</a>
<b>Reactivity</b>	Human
<b>Host</b>	Rabbit
<b>Clonality</b>	Polyclonal
<b>Isotype</b>	Rabbit IgG
<b>Clone Names</b>	RB20849
<b>Calculated MW</b>	50045
<b>Antigen Region</b>	395-423

## Additional Information

---

<b>Other Names</b>	Putative N-acetylated-alpha-linked acidic dipeptidase, NAALADase, 34--, Cell growth-inhibiting gene 26 protein, Prostate-specific membrane antigen-like protein, Putative folate hydrolase 1B, FOLH1B, PSMAL
<b>Target/Specificity</b>	This PSMAL antibody is generated from rabbits immunized with a KLH conjugated synthetic peptide between 395-423 amino acids from the C-terminal region of human PSMAL.
<b>Dilution</b>	WB~~1:1000 FC~~1:10~50 E~~Use at an assay dependent concentration.
<b>Format</b>	Purified polyclonal antibody supplied in PBS with 0.09% (W/V) sodium azide. This antibody is purified through a protein A column, followed by peptide affinity purification.
<b>Storage</b>	Maintain refrigerated at 2-8°C for up to 2 weeks. For long term storage store at -20°C in small aliquots to prevent freeze-thaw cycles.
<b>Precautions</b>	PSMAL Antibody (C-term) is for research use only and not for use in diagnostic or therapeutic procedures.

## Protein Information

---

<b>Name</b>	FOLH1B
<b>Synonyms</b>	PSMAL
<b>Function</b>	Has both folate hydrolase and N-acetylated-alpha-linked- acidic dipeptidase (NAALADase) activity.

**Cellular Location**

Cytoplasm.

**Tissue Location**

Kidney and liver. Not expressed in the prostate.

## Background

---

FOLH1B has both folate hydrolase and N-acetylated-alpha-linked-acidic dipeptidase (NAALADase) activity (By similarity) and exhibits a dipeptidyl-peptidase IV type activity (By similarity).

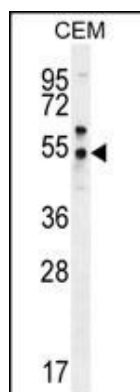
## References

---

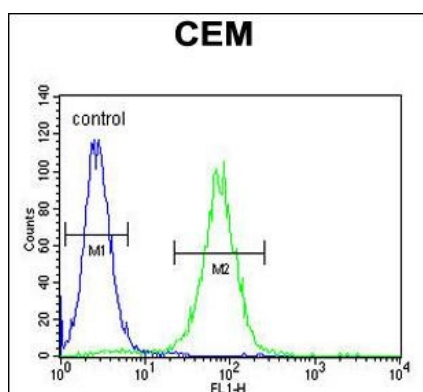
Lambert, L.A., et al. J. Mol. Evol. 64(1):113-128(2007)  
O'Keefe, D.S., et al. Prostate 58(2):200-210(2004)  
O'Keefe, D.S., et al. Biochim. Biophys. Acta 1443 (1-2), 113-127 (1998) :  
Maraj, B.H., et al. Cytogenet. Cell Genet. 81(1):3-9(1998)  
Israeli, R.S., et al. Cancer Res. 53(2):227-230(1993)

## Images

---



PSMAL Antibody (C-term) (Cat. #AP11974b) western blot analysis in CEM cell line lysates (35ug/lane). This demonstrates the PSMAL antibody detected the PSMAL protein (arrow).



PSMAL Antibody (C-term) (Cat. #AP11974b) flow cytometric analysis of CEM cells (right histogram) compared to a negative control cell (left histogram). FITC-conjugated goat-anti-rabbit secondary antibodies were used for the analysis.

Please note: All products are 'FOR RESEARCH USE ONLY. NOT FOR USE IN DIAGNOSTIC OR THERAPEUTIC PROCEDURES'.