

IL17B Antibody (Center)

Affinity Purified Rabbit Polyclonal Antibody (Pab)

Catalog # AP12002C

Product Information

Application	WB, IHC-P, IF, E
Primary Accession	Q9UHF5
Other Accession	NP_055258.1
Reactivity	Human, Mouse
Host	Rabbit
Clonality	Polyclonal
Isotype	Rabbit IgG
Clone Names	RB31605
Calculated MW	20437
Antigen Region	39-66

Additional Information

Gene ID	27190
Other Names	Interleukin-17B, IL-17B, Cytokine Zcyto7, Interleukin-20, IL-20, Neuronal interleukin-17-related factor, IL17B, IL20, NIRF, ZCYTO7
Target/Specificity	This IL17B antibody is generated from rabbits immunized with a KLH conjugated synthetic peptide between 39-66 amino acids from the Central region of human IL17B.
Dilution	WB~~1:500 IHC-P~~1:100~500 IF~~1:10~50 E~~Use at an assay dependent concentration.
Format	Purified polyclonal antibody supplied in PBS with 0.09% (W/V) sodium azide. This antibody is purified through a protein A column, followed by peptide affinity purification.
Storage	Maintain refrigerated at 2-8°C for up to 2 weeks. For long term storage store at -20°C in small aliquots to prevent freeze-thaw cycles.
Precautions	IL17B Antibody (Center) is for research use only and not for use in diagnostic or therapeutic procedures.

Protein Information

Name	IL17B
Synonyms	IL20, NIRF, ZCYTO7

Function	Stimulates the release of tumor necrosis factor alpha and IL- 1-beta from the monocytic cell line THP-1.
Cellular Location	Secreted.
Tissue Location	Expressed in adult pancreas, small intestine, stomach, spinal cord and testis. Less pronounced expression in prostate, colon mucosal lining, and ovary

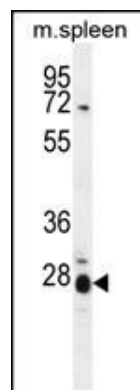
Background

The protein encoded by this gene is a T cell-derived cytokine that shares sequence similarity with IL17. This cytokine was reported to stimulate the release of TNF alpha (TNF) and IL1 beta (IL1B) from a monocytic cell line. Immunohistochemical analysis of several nerve tissues indicated that this cytokine is primarily localized to neuronal cell bodies.

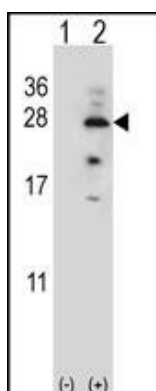
References

Koskinen, L.L., et al. Tissue Antigens 74(5):408-416(2009)
Wang, X., et al. Ann. Otol. Rhinol. Laryngol. 115(6):450-456(2006)
Ryan, A.W., et al. Tissue Antigens 65(2):150-155(2005)
Clark, H.F., et al. Genome Res. 13(10):2265-2270(2003)
Moore, E.E., et al. Neuromuscul. Disord. 12(2):141-150(2002)

Images

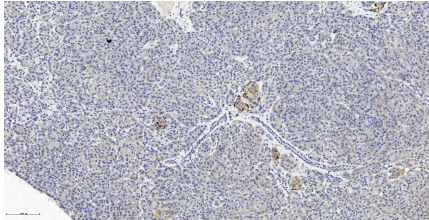
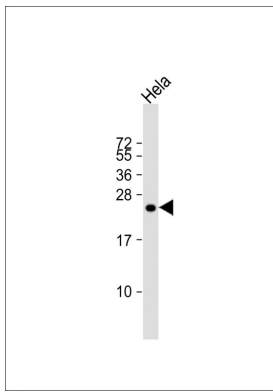


IL17B Antibody (Center) (Cat. #AP12002c) western blot analysis in mouse spleen tissue lysates (35ug/lane). This demonstrates the IL17B antibody detected the IL17B protein (arrow).

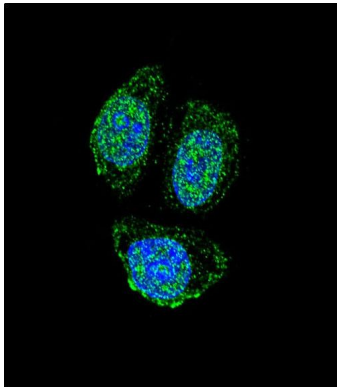


Western blot analysis of IL17B (arrow) using rabbit polyclonal IL17B Antibody (Center) (Cat. #AP12002c). 293 cell lysates (2 ug/lane) either nontransfected (Lane 1) or transiently transfected (Lane 2) with the IL17B gene.

Anti-IL17B Antibody (Center) at 1:1000 dilution + Hela whole cell lysates/proteins at 20 µg per lane. Secondary Goat Anti-Rabbit IgG, (H+L), Peroxidase conjugated at 1/10000 dilution. Predicted band size : 20 kDa Blocking/Dilution buffer: 5% NFDM/TBST.



IL17B Antibody (Center) (Cat. #AP12002c) immunohistochemistry analysis in formalin fixed and paraffin embedded human pancreas tissue followed by peroxidase conjugation of the secondary antibody and DAB staining. This data demonstrates the use of IL17B Antibody (Center) for immunohistochemistry. Clinical relevance has not been evaluated.



Confocal immunofluorescent analysis of IL17B Antibody (Center) (Cat#AP12002c) with HeLa cell followed by Alexa Fluor 488-conjugated goat anti-rabbit IgG (green). DAPI was used to stain the cell nuclear (blue).

Please note: All products are 'FOR RESEARCH USE ONLY. NOT FOR USE IN DIAGNOSTIC OR THERAPEUTIC PROCEDURES'.