

OR1D5 Antibody (C-term)

Affinity Purified Rabbit Polyclonal Antibody (Pab)

Catalog # AP12013b

Product Information

Application	WB, E
Primary Accession	P58170
Other Accession	P47884 , NP_055381.1
Reactivity	Human
Host	Rabbit
Clonality	Polyclonal
Isotype	Rabbit IgG
Clone Names	RB31649
Calculated MW	35424
Antigen Region	244-271

Additional Information

Gene ID	8386
Other Names	Olfactory receptor 1D5, Olfactory receptor 17-31, OR17-31, OR1D5
Target/Specificity	This OR1D5 antibody is generated from rabbits immunized with a KLH conjugated synthetic peptide between 244-271 amino acids from the C-terminal region of human OR1D5.
Dilution	WB~~1:1000 E~~Use at an assay dependent concentration.
Format	Purified polyclonal antibody supplied in PBS with 0.09% (W/V) sodium azide. This antibody is purified through a protein A column, followed by peptide affinity purification.
Storage	Maintain refrigerated at 2-8°C for up to 2 weeks. For long term storage store at -20°C in small aliquots to prevent freeze-thaw cycles.
Precautions	OR1D5 Antibody (C-term) is for research use only and not for use in diagnostic or therapeutic procedures.

Protein Information

Name	OR1D5
Function	Odorant receptor.
Cellular Location	Cell membrane; Multi-pass membrane protein.

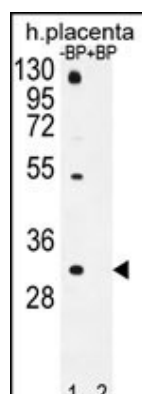
Background

Olfactory receptors interact with odorant molecules in the nose, to initiate a neuronal response that triggers the perception of a smell. The olfactory receptor proteins are members of a large family of G-protein-coupled receptors (GPCR) arising from single coding-exon genes. Olfactory receptors share a 7-transmembrane domain structure with many neurotransmitter and hormone receptors and are responsible for the recognition and G protein-mediated transduction of odorant signals. The olfactory receptor gene family is the largest in the genome. The nomenclature assigned to the olfactory receptor genes and proteins for this organism is independent of other organisms.

References

Malnic, B., et al. Proc. Natl. Acad. Sci. U.S.A. 101(8):2584-2589(2004)
Fuchs, T., et al. Genomics 80(3):295-302(2002)
Glusman, G., et al. Genomics 63(2):227-245(2000)
Selbie, L.A., et al. Brain Res. Mol. Brain Res. 13 (1-2), 159-163 (1992) :

Images



Western blot analysis of OR1D5 Antibody (C-term) Pab (Cat. #AP12013b) pre-incubated without(lane 1) and with(lane 2) blocking peptide in human placenta tissue lysate. OR1D5 Antibody (C-term) (arrow) was detected using the purified Pab.

Please note: All products are 'FOR RESEARCH USE ONLY. NOT FOR USE IN DIAGNOSTIC OR THERAPEUTIC PROCEDURES'.