

PCDH1 Antibody (N-term)

Affinity Purified Rabbit Polyclonal Antibody (Pab)

Catalog # AP12019A

Product Information

Application	WB, IHC-P, IF, E
Primary Accession	Q08174
Other Accession	NP_115796.2
Reactivity	Human
Host	Rabbit
Clonality	Polyclonal
Isotype	Rabbit IgG
Clone Names	RB31671
Calculated MW	114743
Antigen Region	179-206

Additional Information

Gene ID	5097
Other Names	Protocadherin-1, Cadherin-like protein 1, Protocadherin-42, PC42, PCDH1
Target/Specificity	This PCDH1 antibody is generated from rabbits immunized with a KLH conjugated synthetic peptide between 179-206 amino acids from the N-terminal region of human PCDH1.
Dilution	WB~~1:1000 IHC-P~~1:100~500 IF~~1:10~50 E~~Use at an assay dependent concentration.
Format	Purified polyclonal antibody supplied in PBS with 0.05% (V/V) Proclin 300. This antibody is purified through a protein A column, followed by peptide affinity purification.
Storage	Maintain refrigerated at 2-8°C for up to 2 weeks. For long term storage store at -20°C in small aliquots to prevent freeze-thaw cycles.
Precautions	PCDH1 Antibody (N-term) is for research use only and not for use in diagnostic or therapeutic procedures.

Protein Information

Name	PCDH1
Function	May be involved in cell-cell interaction processes and in cell adhesion.
Cellular Location	Cell junction. Cell membrane; Single-pass type I membrane protein.

Note=Found at cell- cell boundaries and probably at cell-matrix boundaries

Tissue Location

Highly expressed in the brain and neuro-glial cells

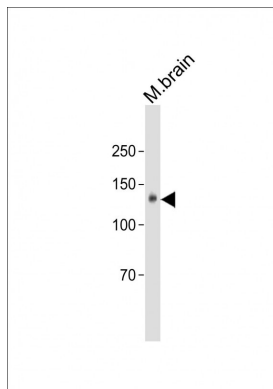
Background

This gene belongs to the protocadherin subfamily within the cadherin superfamily. The encoded protein is a membrane protein found at cell-cell boundaries. It is involved in neural cell adhesion, suggesting a possible role in neuronal development. The protein includes an extracellular region, containing 7 cadherin-like domains, a transmembrane region and a C-terminal cytoplasmic region. Cells expressing the protein showed cell aggregation activity. Alternative splicing occurs in this gene.

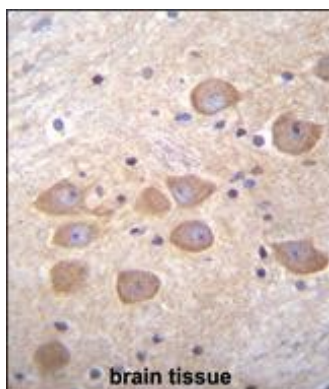
References

Koppelman, G.H., et al. Am. J. Respir. Crit. Care Med. 180(10):929-935(2009)
Rush, J., et al. Nat. Biotechnol. 23(1):94-101(2005)
Ballif, B.A., et al. Mol. Cell Proteomics 3(11):1093-1101(2004)
Ballif, B.A., et al. Mol. Cell Proteomics 3(11):1093-1101(2004)
Colland, F., et al. Genome Res. 14(7):1324-1332(2004)

Images

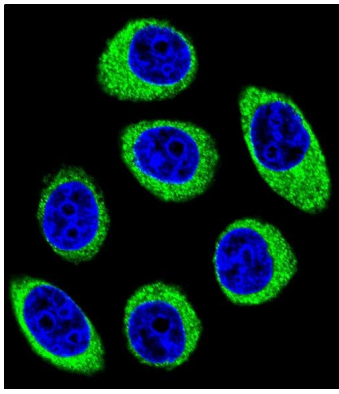


All lanes: Anti-PCDH1 Antibody (N-term) at 1:500 dilution + Mouse brain lysate Lysates/proteins at 20 µg per lane. Secondary: Goat Anti-Rabbit IgG, (H+L), Peroxidase conjugated (ASP1615) at 1/15000 dilution. Observed band size: 148 KDa Blocking/Dilution buffer: 5% NFDm/TBST.



PCDH1 Antibody (N-term) (Cat. #AP12019a) immunohistochemistry analysis in formalin fixed and paraffin embedded human brain tissue followed by peroxidase conjugation of the secondary antibody and DAB staining. This data demonstrates the use of PCDH1 Antibody (N-term) for immunohistochemistry. Clinical relevance has not been evaluated.

Confocal immunofluorescent analysis of PCDH1 Antibody (N-term) (Cat. #AP12019a) with U-251MG cell followed by Alexa Fluor 488-conjugated goat anti-rabbit IgG (green). DAPI was used to stain the cell nuclear (blue).



Please note: All products are 'FOR RESEARCH USE ONLY. NOT FOR USE IN DIAGNOSTIC OR THERAPEUTIC PROCEDURES'.