

TBCA Antibody (Center)

Affinity Purified Rabbit Polyclonal Antibody (Pab)

Catalog # AP12024C

Product Information

Application	WB, IHC-P, E
Primary Accession	O75347
Other Accession	NP_004598.1
Reactivity	Human, Mouse
Host	Rabbit
Clonality	Polyclonal
Isotype	Rabbit IgG
Clone Names	RB31699
Calculated MW	12855
Antigen Region	30-58

Additional Information

Gene ID	6902
Other Names	Tubulin-specific chaperone A, TCP1-chaperonin cofactor A, Tubulin-folding cofactor A, CFA, TBCA
Target/Specificity	This TBCA antibody is generated from rabbits immunized with a KLH conjugated synthetic peptide between 30-58 amino acids from the Central region of human TBCA.
Dilution	WB~~1:1000 IHC-P~~1:100~500 E~~Use at an assay dependent concentration.
Format	Purified polyclonal antibody supplied in PBS with 0.09% (W/V) sodium azide. This antibody is purified through a protein A column, followed by peptide affinity purification.
Storage	Maintain refrigerated at 2-8°C for up to 2 weeks. For long term storage store at -20°C in small aliquots to prevent freeze-thaw cycles.
Precautions	TBCA Antibody (Center) is for research use only and not for use in diagnostic or therapeutic procedures.

Protein Information

Name	TBCA
Function	Tubulin-folding protein; involved in the early step of the tubulin folding pathway.

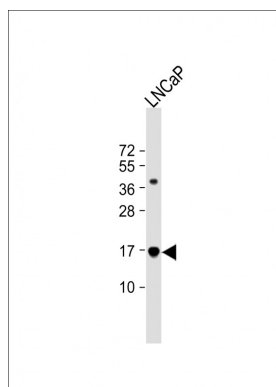
Background

The product of this gene is one of four proteins (cofactors A, D, E, and C) involved in the pathway leading to correctly folded beta-tubulin from folding intermediates. Cofactors A and D are believed to play a role in capturing and stabilizing beta-tubulin intermediates in a quasi-native confirmation. Cofactor E binds to the cofactor D/beta-tubulin complex; interaction with cofactor C then causes the release of beta-tubulin polypeptides that are committed to the native state. This gene encodes chaperonin cofactor A.

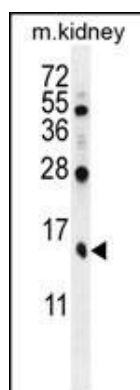
References

Rose, J.E., et al. Mol. Med. 16 (7-8), 247-253 (2010) :
Joslyn, G., et al. Alcohol. Clin. Exp. Res. 34(5):800-812(2010)
Bruneel, A., et al. Proteomics 5(15):3876-3884(2005)
Nolasco, S., et al. FEBS Lett. 579(17):3515-3524(2005)
Guasch, A., et al. J. Mol. Biol. 318(4):1139-1149(2002)

Images

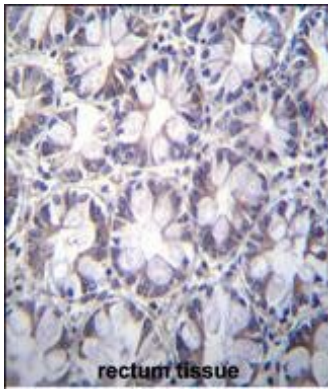


Anti-TBCA Antibody (Center) at 1:1000 dilution + LNCaP whole cell lysate Lysates/proteins at 20 µg per lane. Secondary Goat Anti-Rabbit IgG, (H+L), Peroxidase conjugated at 1/10000 dilution. Predicted band size : 13 kDa Blocking/Dilution buffer: 5% NFDM/TBST.



TBCA Antibody (Center) (Cat. #AP12024c) western blot analysis in mouse kidney tissue lysates (35ug/lane). This demonstrates the TBCA antibody detected the TBCA protein (arrow).

TBCA Antibody (Center) (Cat. #AP12024c) immunohistochemistry analysis in formalin fixed and paraffin embedded human rectum tissue followed by peroxidase conjugation of the secondary antibody and DAB staining. This data demonstrates the use of TBCA Antibody (Center) for immunohistochemistry. Clinical relevance has not been evaluated.



Please note: All products are 'FOR RESEARCH USE ONLY. NOT FOR USE IN DIAGNOSTIC OR THERAPEUTIC PROCEDURES'.