

# XCR1 Antibody (C-term)

Affinity Purified Rabbit Polyclonal Antibody (Pab)

Catalog # AP12041b

## Product Information

---

Application	WB, E
Primary Accession	<a href="#">P46094</a>
Other Accession	<a href="#">NP_005274.1</a>
Reactivity	Human
Host	Rabbit
Clonality	Polyclonal
Isotype	Rabbit IgG
Clone Names	RB31951
Calculated MW	38508
Antigen Region	305-333

## Additional Information

---

Gene ID	2829
Other Names	Chemokine XC receptor 1, G-protein coupled receptor 5, Lymphotactin receptor, XC chemokine receptor 1, XCR1, CCXCR1, GPR5
Target/Specificity	This XCR1 antibody is generated from rabbits immunized with a KLH conjugated synthetic peptide between 305-333 amino acids from the C-terminal region of human XCR1.
Dilution	WB~~1:2000 E~~Use at an assay dependent concentration.
Format	Purified polyclonal antibody supplied in PBS with 0.09% (W/V) sodium azide. This antibody is purified through a protein A column, followed by peptide affinity purification.
Storage	Maintain refrigerated at 2-8°C for up to 2 weeks. For long term storage store at -20°C in small aliquots to prevent freeze-thaw cycles.
Precautions	XCR1 Antibody (C-term) is for research use only and not for use in diagnostic or therapeutic procedures.

## Protein Information

---

Name	XCR1
Synonyms	CCXCR1, GPR5
Function	Receptor for chemokines SCYC1 and SCYC2. Subsequently transduces a

signal by increasing the intracellular calcium ions level. Receptor for XCL1/Lymphotactin.

#### Cellular Location

Cell membrane; Multi-pass membrane protein.

## Background

---

The protein encoded by this gene is a chemokine receptor belonging to the G protein-coupled receptor superfamily. The family members are characterized by the presence of 7 transmembrane domains and numerous conserved amino acids. This receptor is most closely related to RBS11 and the MIP1-alpha/RANTES receptor. It transduces a signal by increasing the intracellular calcium ions level. The viral macrophage inflammatory protein-II is an antagonist of this receptor and blocks signaling. Two alternatively spliced transcript variants encoding the same protein have been found for this gene.

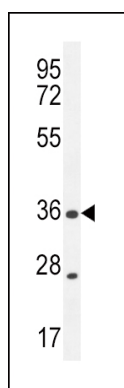
## References

---

Yamazaki, C., et al. Biochem. Biophys. Res. Commun. 397(4):756-761(2010)  
Crozat, K., et al. J. Exp. Med. 207(6):1283-1292(2010)  
Bachem, A., et al. J. Exp. Med. 207(6):1273-1281(2010)  
Davila, S., et al. Genes Immun. 11(3):232-238(2010)  
Luttichau, H.R. Virol. J. 5, 50 (2008) :

## Images

---



XCR1 Antibody (C-term) (Cat. #AP12041b) western blot analysis in MDA-MB435 cell line lysates (35ug/lane). This demonstrates the XCR1 antibody detected the XCR1 protein (arrow).

Please note: All products are 'FOR RESEARCH USE ONLY. NOT FOR USE IN DIAGNOSTIC OR THERAPEUTIC PROCEDURES'.