

# Kif5C-2 Antibody

Affinity Purified Rabbit Polyclonal Antibody (Pab)

Catalog # AP12055a

## Product Information

---

Application	WB, IHC-P, E
Primary Accession	<a href="#">O60282</a>
Other Accession	<a href="#">P28738</a> , <a href="#">NP_004513.1</a>
Reactivity	Human, Mouse
Host	Rabbit
Clonality	Polyclonal
Isotype	Rabbit IgG
Clone Names	RB07180
Calculated MW	109495

## Additional Information

---

Gene ID	3800
Other Names	Kinesin heavy chain isoform 5C, Kinesin heavy chain neuron-specific 2, KIF5C, KIAA0531, NKHC2
Target/Specificity	This KIF5C antibody is generated from rabbits immunized with a KLH conjugated synthetic peptide selected from human KIF5C.
Dilution	WB~~1:1000 IHC-P~~1:100~500 E~~Use at an assay dependent concentration.
Format	Purified polyclonal antibody supplied in PBS with 0.05% (V/V) Proclin 300. This antibody is purified through a protein A column, followed by peptide affinity purification.
Storage	Maintain refrigerated at 2-8°C for up to 2 weeks. For long term storage store at -20°C in small aliquots to prevent freeze-thaw cycles.
Precautions	Kif5C-2 Antibody is for research use only and not for use in diagnostic or therapeutic procedures.

## Protein Information

---

Name	KIF5C
Synonyms	KIAA0531, NKHC2
Function	Microtubule-associated force-producing protein that may play a role in organelle transport. Has ATPase activity (By similarity). Involved in synaptic transmission (PubMed: <a href="#">24812067</a> ). Mediates dendritic trafficking of mRNAs

(By similarity). Required for anterograde axonal transportation of MAPK8IP3/JIP3 which is essential for MAPK8IP3/JIP3 function in axon elongation (By similarity).

#### Cellular Location

Cytoplasm, cytoskeleton. Cell projection, dendrite. Note=Abundant in distal regions of dendrites.

#### Tissue Location

Highest expression in brain, prostate and testis, and moderate expression in kidney, small intestine and ovary

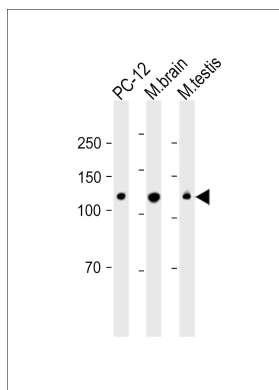
## Background

Kinesin is a microtubule-associated force-producing protein that may play a role in organelle transport.

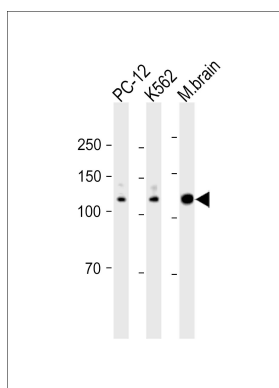
## References

Rose, J. Phd, et al. Mol. Med. (2010) In press :  
Wang, X., et al. Cell 136(1):163-174(2009)  
Schafer, B., et al. Cell. Mol. Life Sci. 66(2):339-349(2009)  
Schafer, B., et al. Biochem. Biophys. Res. Commun. 375(2):179-183(2008)  
Cho, K.I., et al. Traffic 8(12):1722-1735(2007)

## Images



All lanes: Anti-Kif5C-2 Antibody at 1:2000 dilution Lane 1: PC-12 whole cell lysate Lane 2: Mouse brain lysate Lane 3: Mouse testis lysate Lysates/proteins at 20 µg per lane. Secondary: Goat Anti-Rabbit IgG, (H+L), Peroxidase conjugated (ASP1615) at 1/15000 dilution. Observed band size: 110 KDa Blocking/Dilution buffer: 5% NFDM/TBST.



All lanes: Anti-Kif5C-2 Antibody at 1:2000 dilution Lane 1: PC-12 whole cell lysate Lane 2: K562 whole cell lysate Lane 3: Mouse brain lysate Lysates/proteins at 20 µg per lane. Secondary: Goat Anti-Rabbit IgG, (H+L), Peroxidase conjugated (ASP1615) at 1/15000 dilution. Observed band size: 110 KDa Blocking/Dilution buffer: 5% NFDM/TBST.

Please note: All products are 'FOR RESEARCH USE ONLY. NOT FOR USE IN DIAGNOSTIC OR THERAPEUTIC PROCEDURES'.