

Maspin Antibody (Center)

Affinity Purified Rabbit Polyclonal Antibody (Pab)

Catalog # AP12083c

Product Information

Application	IHC-P, IF, WB, E
Primary Accession	P36952
Other Accession	P70124 , NP_002630.2
Reactivity	Human, Rat, Mouse
Host	Rabbit
Clonality	Polyclonal
Isotype	Rabbit IgG
Clone Names	RB18808
Calculated MW	42100
Antigen Region	94-123

Additional Information

Gene ID	5268
Other Names	Serpin B5, Maspin, Peptidase inhibitor 5, PI-5, SERPINB5, PI5
Target/Specificity	This Maspin antibody is generated from rabbits immunized with a KLH conjugated synthetic peptide between 94-123 amino acids from the Central region of human Maspin.
Dilution	IHC-P~~1:100~500 IF~~1:10~50 WB~~1:1000 E~~Use at an assay dependent concentration.
Format	Purified polyclonal antibody supplied in PBS with 0.09% (W/V) sodium azide. This antibody is purified through a protein A column, followed by peptide affinity purification.
Storage	Maintain refrigerated at 2-8°C for up to 2 weeks. For long term storage store at -20°C in small aliquots to prevent freeze-thaw cycles.
Precautions	Maspin Antibody (Center) is for research use only and not for use in diagnostic or therapeutic procedures.

Protein Information

Name	SERPINB5
Synonyms	PI5
Function	Tumor suppressor. It blocks the growth, invasion, and metastatic properties

of mammary tumors. As it does not undergo the S (stressed) to R (relaxed) conformational transition characteristic of active serpins, it exhibits no serine protease inhibitory activity.

Cellular Location Secreted, extracellular space.

Tissue Location Normal mammary epithelial cells.

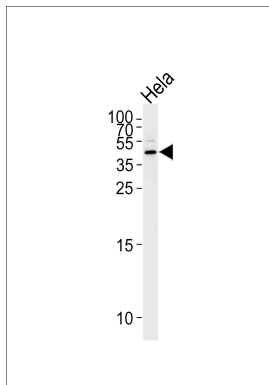
Background

SERPINB5 is a tumor suppressor. It blocks the growth, invasion, and metastatic properties of mammary tumors. As it does not undergo the S (stressed) to R (relaxed) conformational transition characteristic of active serpins, it exhibits no serine protease inhibitory activity.

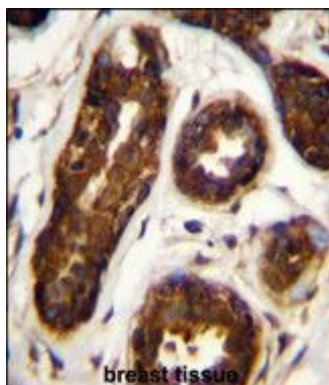
References

Kim, J., et al. Tumour Biol. 31(5):471-476(2010)
Juengel, E., et al. World J Urol 28(4):465-471(2010)
Besgen, P., et al. J. Immunol. 184(9):5392-5402(2010)
Fung, C.L., et al. Histopathology 56(3):319-330(2010)
Adim, S.B., et al. World J Surg Oncol 8, 22 (2010) :

Images

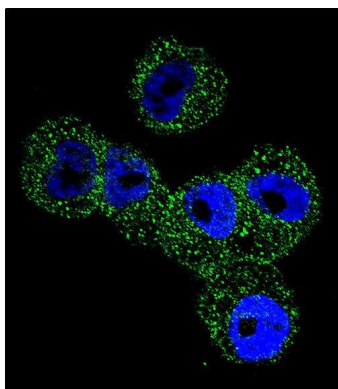


Western blot analysis of lysate from HeLa cell line, using Maspin Antibody (Center)(Cat. #AP12083c). AP12083c was diluted at 1:1000 at each lane. A goat anti-rabbit IgG H&L(HRP) at 1:5000 dilution was used as the secondary antibody. Lysate at 35ug per lane.



Maspin Antibody (Center) (Cat. #AP12083c) immunohistochemistry analysis in formalin fixed and paraffin embedded human breast tissue followed by peroxidase conjugation of the secondary antibody and DAB staining. This data demonstrates the use of Maspin Antibody (Center) for immunohistochemistry. Clinical relevance has not been evaluated.

Confocal immunofluorescent analysis of Maspin Antibody (Center)(Cat#AP12083c) with A2058 cell followed by Alexa Fluor 488-conjugated goat anti-rabbit IgG (green). DAPI was used to stain the cell nuclear (blue).



Citations

- [Maspin impairs the function of endothelial cells: an implying pathway of preeclampsia.](#)
- [Decitabine improves the clinical manifestations of rats with L-NAME-induced pre-eclampsia: a potential approach to studying pre-eclampsia.](#)

Please note: All products are 'FOR RESEARCH USE ONLY. NOT FOR USE IN DIAGNOSTIC OR THERAPEUTIC PROCEDURES'.