

ZEB2 Antibody (C-term)

Affinity Purified Rabbit Polyclonal Antibody (Pab)

Catalog # AP12086B

Product Information

Application	FC, WB, E
Primary Accession	O60315
Other Accession	Q9R0G7 , NP_055610.1 , NP_001165124.1
Reactivity	Human, Mouse
Predicted	Mouse
Host	Rabbit
Clonality	Polyclonal
Isotype	Rabbit IgG
Clone Names	RB19137
Calculated MW	136447
Antigen Region	1078-1105

Additional Information

Gene ID	9839
Other Names	Zinc finger E-box-binding homeobox 2, Smad-interacting protein 1, SMADIP1, Zinc finger homeobox protein 1b, ZEB2, KIAA0569, SIP1, ZFH1B, ZFX1B
Target/Specificity	This ZEB2 antibody is generated from rabbits immunized with a KLH conjugated synthetic peptide between 1078-1105 amino acids from the C-terminal region of human ZEB2.
Dilution	FC~~1:10~50 WB~~1:1000 E~~Use at an assay dependent concentration.
Format	Purified polyclonal antibody supplied in PBS with 0.09% (W/V) sodium azide. This antibody is purified through a protein A column, followed by peptide affinity purification.
Storage	Maintain refrigerated at 2-8°C for up to 2 weeks. For long term storage store at -20°C in small aliquots to prevent freeze-thaw cycles.
Precautions	ZEB2 Antibody (C-term) is for research use only and not for use in diagnostic or therapeutic procedures.

Protein Information

Name	ZEB2 (HGNC:14881)
Function	Transcriptional inhibitor that binds to DNA sequence 5'- CACCT-3' in different promoters (PubMed: 16061479 , PubMed: 20516212). Represses

transcription of E-cadherin (PubMed:[16061479](#)). Represses expression of MEOX2 (PubMed:[20516212](#)).

Cellular Location

Nucleus. Chromosome

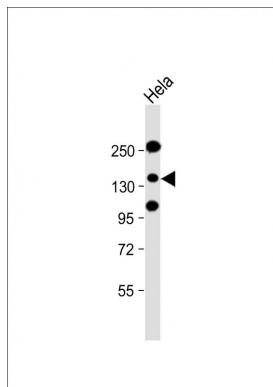
Background

The protein encoded by this gene is a member of the Zfh1 family of 2-handed zinc finger/homeodomain proteins. It is located in the nucleus and functions as a DNA-binding transcriptional repressor that interacts with activated SMADs. Mutations in this gene are associated with Hirschsprung disease/Mowat-Wilson syndrome. Alternatively spliced transcript variants have been found for this gene.

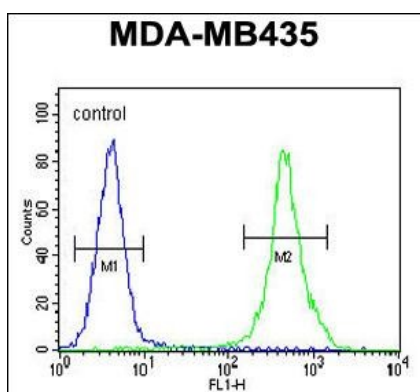
References

Kumar, P.A., et al. J. Biol. Chem. 285(41):31148-31156(2010)
Li, A., et al. Cancer Res. 70(13):5226-5237(2010)
Ohashi, S., et al. Cancer Res. 70(10):4174-4184(2010)
Jugessur, A., et al. PLoS ONE 5 (7), E11493 (2010) :
Eriksson, N., et al. PLoS Genet. 6 (6), E1000993 (2010) :

Images



Anti-ZEB2 Antibody (C-term) at 1:2000 dilution + HeLa cell nucleus lysate Lysates/proteins at 20 µg per lane. Secondary Goat Anti-Rabbit IgG, (H+L), Peroxidase conjugated at 1/10000 dilution. Predicted band size : 136 kDa Blocking/Dilution buffer: 5% NFDM/TBST.



ZEB2 Antibody (C-term) (Cat. #AP12086b) flow cytometric analysis of MDA-MB435 cells (right histogram) compared to a negative control cell (left histogram). FITC-conjugated goat-anti-rabbit secondary antibodies were used for the analysis.

Please note: All products are 'FOR RESEARCH USE ONLY. NOT FOR USE IN DIAGNOSTIC OR THERAPEUTIC PROCEDURES'.