

ENPEP Antibody (C-term)

Affinity Purified Rabbit Polyclonal Antibody (Pab)

Catalog # AP12090b

Product Information

Application	WB, IHC-P, FC, E
Primary Accession	Q07075
Other Accession	NP_001968.3
Reactivity	Human
Host	Rabbit
Clonality	Polyclonal
Isotype	Rabbit IgG
Clone Names	RB19291
Calculated MW	109244
Antigen Region	899-930

Additional Information

Gene ID	2028
Other Names	Glutamyl aminopeptidase, EAP, Aminopeptidase A, AP-A, Differentiation antigen gp160, CD249, ENPEP
Target/Specificity	This ENPEP antibody is generated from rabbits immunized with a KLH conjugated synthetic peptide between 899-930 amino acids from the C-terminal region of human ENPEP.
Dilution	WB~~1:1000 IHC-P~~1:100~500 FC~~1:10~50 E~~Use at an assay dependent concentration.
Format	Purified polyclonal antibody supplied in PBS with 0.09% (W/V) sodium azide. This antibody is purified through a protein A column, followed by peptide affinity purification.
Storage	Maintain refrigerated at 2-8°C for up to 2 weeks. For long term storage store at -20°C in small aliquots to prevent freeze-thaw cycles.
Precautions	ENPEP Antibody (C-term) is for research use only and not for use in diagnostic or therapeutic procedures.

Protein Information

Name	ENPEP
Function	Regulates central hypertension through its calcium-modulated preference to cleave N-terminal acidic residues from peptides such as angiotensin II.

Cellular Location

Cell membrane; Single-pass type II membrane protein

Tissue Location

Expressed in choriocarcinoma cancer cell lines (at protein level) (PubMed:10692253). Expressed by epithelial cells of the proximal tubule cells and the glomerulus of the nephron. Also found in a variety of other tissues.

Background

ENPEP appears to have a role in the catabolic pathway of the renin-angiotensin system. Probably plays a role in regulating growth and differentiation of early B-lineage cells.

References

Kalsi, G., et al. Hum. Mol. Genet. 19(12):2497-2506(2010)

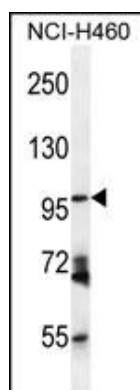
Rose, J. Phd, et al. Mol. Med. (2010) In press :

Perez, I., et al. Head Neck 31(10):1335-1340(2009)

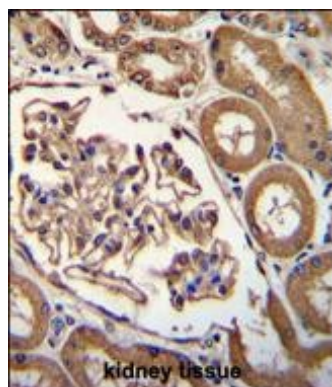
Sevalle, J., et al. J. Neurochem. 109(1):248-256(2009)

Teranishi, J., et al. Prostate 68(15):1666-1673(2008)

Images

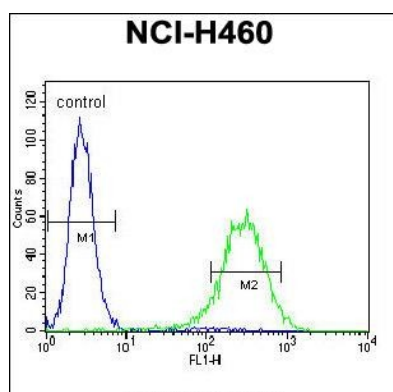


ENPEP Antibody (C-term) (Cat. #AP12090b) western blot analysis in NCI-H460 cell line lysates (35ug/lane). This demonstrates the ENPEP antibody detected the ENPEP protein (arrow).



ENPEP Antibody (C-term) (Cat. #AP12090b) immunohistochemistry analysis in formalin fixed and paraffin embedded human kidney tissue followed by peroxidase conjugation of the secondary antibody and DAB staining. This data demonstrates the use of ENPEP Antibody (C-term) for immunohistochemistry. Clinical relevance has not been evaluated.

ENPEP Antibody (C-term) (Cat. #AP12090b) flow cytometric analysis of NCI-H460 cells (right histogram) compared to a negative control cell (left histogram). FITC-conjugated goat-anti-rabbit secondary antibodies were used for the analysis.



Please note: All products are 'FOR RESEARCH USE ONLY. NOT FOR USE IN DIAGNOSTIC OR THERAPEUTIC PROCEDURES'.