

# TSPYL4 Antibody (C-term)

Affinity Purified Rabbit Polyclonal Antibody (Pab)

Catalog # AP12092b

## Product Information

---

<b>Application</b>	WB, E
<b>Primary Accession</b>	<a href="#">Q9UJ04</a>
<b>Other Accession</b>	<a href="#">NP_067680.3</a>
<b>Reactivity</b>	Human, Mouse
<b>Host</b>	Rabbit
<b>Clonality</b>	Polyclonal
<b>Isotype</b>	Rabbit IgG
<b>Clone Names</b>	RB19912
<b>Calculated MW</b>	45126
<b>Antigen Region</b>	322-350

## Additional Information

---

<b>Gene ID</b>	23270
<b>Other Names</b>	Testis-specific Y-encoded-like protein 4, TSPY-like protein 4, TSPYL4, KIAA0721
<b>Target/Specificity</b>	This TSPYL4 antibody is generated from rabbits immunized with a KLH conjugated synthetic peptide between 322-350 amino acids from the C-terminal region of human TSPYL4.
<b>Dilution</b>	WB~~1:1000 E~~Use at an assay dependent concentration.
<b>Format</b>	Purified polyclonal antibody supplied in PBS with 0.09% (W/V) sodium azide. This antibody is purified through a protein A column, followed by peptide affinity purification.
<b>Storage</b>	Maintain refrigerated at 2-8°C for up to 2 weeks. For long term storage store at -20°C in small aliquots to prevent freeze-thaw cycles.
<b>Precautions</b>	TSPYL4 Antibody (C-term) is for research use only and not for use in diagnostic or therapeutic procedures.

## Protein Information

---

<b>Name</b>	TSPYL4
<b>Synonyms</b>	KIAA0721

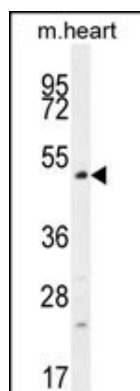
## References

---

Mungall, A.J., et al. Nature 425(6960):805-811(2003)  
Nakayama, M., et al. Genome Res. 12(11):1773-1784(2002)

## Images

---



TSPYL4 Antibody (C-term) (Cat. #AP12092b) western blot analysis in mouse heart tissue lysates (35ug/lane). This demonstrates the TSPYL4 antibody detected the TSPYL4 protein (arrow).

Please note: All products are 'FOR RESEARCH USE ONLY. NOT FOR USE IN DIAGNOSTIC OR THERAPEUTIC PROCEDURES'.