

hCG_1657980 Antibody (Center)

Affinity Purified Rabbit Polyclonal Antibody (Pab)

Catalog # AP12110c

Product Information

Application	WB, E
Other Accession	NP_001096129.1
Reactivity	Human
Host	Rabbit
Clonality	Polyclonal
Isotype	Rabbit IgG
Clone Names	RB29706
Antigen Region	94-122

Additional Information

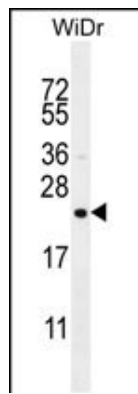
Target/Specificity	This hCG_1657980 antibody is generated from rabbits immunized with a KLH conjugated synthetic peptide between 94-122 amino acids from the Central region of human hCG_1657980.
Dilution	WB~~1:1000 E~~Use at an assay dependent concentration.
Format	Purified polyclonal antibody supplied in PBS with 0.09% (W/V) sodium azide. This antibody is purified through a protein A column, followed by peptide affinity purification.
Storage	Maintain refrigerated at 2-8°C for up to 2 weeks. For long term storage store at -20°C in small aliquots to prevent freeze-thaw cycles.
Precautions	hCG_1657980 Antibody (Center) is for research use only and not for use in diagnostic or therapeutic procedures.

References

Venter, J.C., et al. Science 291(5507):1304-1351(2001)

Images

hCG_1657980 Antibody (Center) (Cat. #AP12110c)
western blot analysis in WiDr cell line lysates
(35ug/lane). This demonstrates the hCG_1657980
antibody detected the hCG_1657980 protein (arrow).



Please note: All products are 'FOR RESEARCH USE ONLY. NOT FOR USE IN DIAGNOSTIC OR THERAPEUTIC PROCEDURES'.