

RBPMs2 Antibody (Center)

Affinity Purified Rabbit Polyclonal Antibody (Pab)

Catalog # AP12121c

Product Information

Application	WB, IHC-P, E
Primary Accession	Q6ZRY4
Other Accession	Q9YGP5 , Q9W6I1 , NP_919248.1
Reactivity	Mouse
Predicted	Chicken, Xenopus
Host	Rabbit
Clonality	Polyclonal
Isotype	Rabbit IgG
Clone Names	RB29796
Calculated MW	22497
Antigen Region	113-141

Additional Information

Gene ID	348093
Other Names	RNA-binding protein with multiple splicing 2, RBPMs2
Target/Specificity	This RBPMs2 antibody is generated from rabbits immunized with a KLH conjugated synthetic peptide between 113-141 amino acids from the Central region of human RBPMs2.
Dilution	WB~~1:1000 IHC-P~~1:100~500 E~~Use at an assay dependent concentration.
Format	Purified polyclonal antibody supplied in PBS with 0.05% (V/V) Proclin 300. This antibody is purified through a protein A column, followed by peptide affinity purification.
Storage	Maintain refrigerated at 2-8°C for up to 2 weeks. For long term storage store at -20°C in small aliquots to prevent freeze-thaw cycles.
Precautions	RBPMs2 Antibody (Center) is for research use only and not for use in diagnostic or therapeutic procedures.

Protein Information

Name	RBPMs2
Function	RNA-binding protein involved in the regulation of smooth muscle cell differentiation and proliferation in the gastrointestinal system (PubMed: 25064856). Binds NOG mRNA, the major inhibitor of the bone

morphogenetic protein (BMP) pathway. Mediates an increase of NOG mRNA levels, thereby contributing to the negative regulation of BMP signaling pathway and promoting reversible dedifferentiation and proliferation of smooth muscle cells (By similarity). Acts as a pre- mRNA alternative splicing regulator (By similarity). Mediates ACTN1 and FLNB alternative splicing (By similarity). Likely binds to mRNA tandem CAC trinucleotide or CA dinucleotide motifs (PubMed:[24860013](#)).

Cellular Location

Cytoplasm. Nucleus Cytoplasm, Stress granule. Note=Localized to cytoplasmic stress granules after oxidative stress

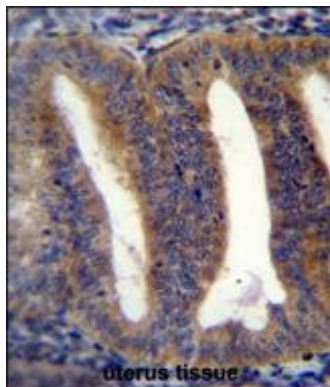
Background

BPMS2 contains one RRM (RNA recognition motif) domain. The exact function of BPMS2 remains unknown.

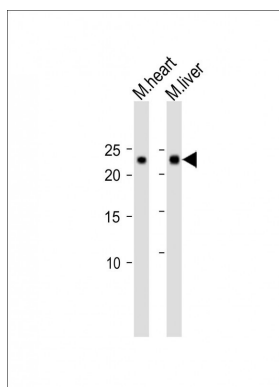
References

Strausberg, R.L., et al. Proc. Natl. Acad. Sci. U.S.A. 99(26):16899-16903(2002)

Images



BPMS2 Antibody (Center) (Cat. #AP12121c) immunohistochemistry analysis in formalin fixed and paraffin embedded human uterus tissue followed by peroxidase conjugation of the secondary antibody and DAB staining. This data demonstrates the use of BPMS2 Antibody (Center) for immunohistochemistry. Clinical relevance has not been evaluated.



All lanes: Anti-BPMS2 Antibody (Center) at 1:500 dilution
Lane 1: Mouse heart lysate Lane 2: Mouse liver lysate
Lysates/proteins at 20 µg per lane. Secondary: Goat Anti-Rabbit IgG, (H+L), Peroxidase conjugated (ASP1615) at 1/15000 dilution. Observed band size: 22.5 kDa
Blocking/Dilution buffer: 5% NFDM/TBST.

Please note: All products are 'FOR RESEARCH USE ONLY. NOT FOR USE IN DIAGNOSTIC OR THERAPEUTIC PROCEDURES'.