

C20orf201 Antibody (C-term)

Affinity Purified Rabbit Polyclonal Antibody (Pab)

Catalog # AP12128B

Product Information

Application	WB, IHC-P, IF, FC, E
Primary Accession	Q8TD35
Other Accession	NP_001007126.1
Reactivity	Human
Host	Rabbit
Clonality	Polyclonal
Isotype	Rabbit IgG
Clone Names	RB29926
Calculated MW	21508
Antigen Region	148-176

Additional Information

Gene ID	198437
Other Names	Protein LKAAEAR1, LKAAEAR motif-containing protein 1, LKAAEAR1, C20orf201
Target/Specificity	This C20orf201 antibody is generated from rabbits immunized with a KLH conjugated synthetic peptide between 148-176 amino acids from the C-terminal region of human C20orf201.
Dilution	WB~~1:1000 IHC-P~~1:100~500 IF~~1:10~50 FC~~1:10~50 E~~Use at an assay dependent concentration.
Format	Purified polyclonal antibody supplied in PBS with 0.05% (V/V) Proclin 300. This antibody is purified through a protein A column, followed by peptide affinity purification.
Storage	Maintain refrigerated at 2-8°C for up to 2 weeks. For long term storage store at -20°C in small aliquots to prevent freeze-thaw cycles.
Precautions	C20orf201 Antibody (C-term) is for research use only and not for use in diagnostic or therapeutic procedures.

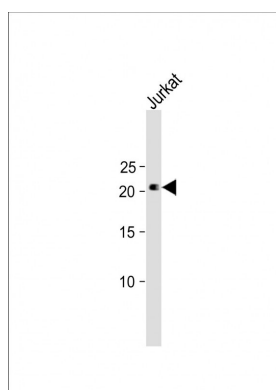
Protein Information

Name	LKAAEAR1
Synonyms	C20orf201

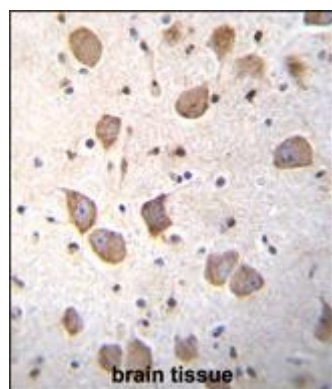
References

Strausberg, R.L., et al. Proc. Natl. Acad. Sci. U.S.A. 99(26):16899-16903(2002)

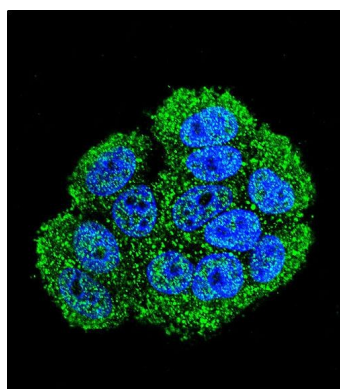
Images



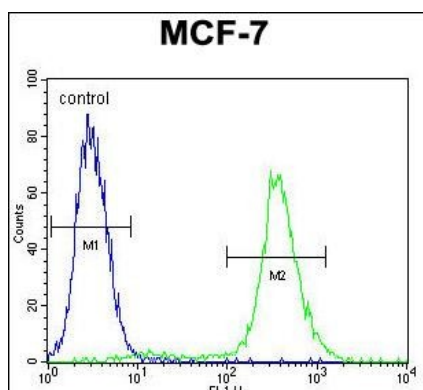
All lanes: Anti-C20orf201 Antibody (C-term) at 1:1000 dilution + Jurkat whole cell lysate Lysates/proteins at 20 µg per lane. Secondary: Goat Anti-Rabbit IgG, (H+L), Peroxidase conjugated (ASP1615) at 1/15000 dilution. Observed band size: 22 KDa Blocking/Dilution buffer: 5% NFDm/TBST.



C20orf201 Antibody (C-term) (Cat. #AP12128b) immunohistochemistry analysis in formalin fixed and paraffin embedded human brain tissue followed by peroxidase conjugation of the secondary antibody and DAB staining. This data demonstrates the use of C20orf201 Antibody (C-term) for immunohistochemistry. Clinical relevance has not been evaluated.



Confocal immunofluorescent analysis of C20orf201 Antibody (C-term) (Cat. #AP12128b) with MCF-7 cell followed by Alexa Fluor 488-conjugated goat anti-rabbit IgG (green). DAPI was used to stain the cell nuclear (blue).



C20orf201 Antibody (C-term) (Cat. #AP12128b) flow cytometric analysis of MCF-7 cells (right histogram) compared to a negative control cell (left histogram). FITC-conjugated goat-anti-rabbit secondary antibodies were used for the analysis.

Please note: All products are 'FOR RESEARCH USE ONLY. NOT FOR USE IN DIAGNOSTIC OR THERAPEUTIC PROCEDURES'.