

PRAMEF12 Antibody (Center)

Affinity Purified Rabbit Polyclonal Antibody (Pab)

Catalog # AP12129c

Product Information

Application	WB, E
Primary Accession	O95522
Other Accession	NP_001074299.1
Reactivity	Human
Host	Rabbit
Clonality	Polyclonal
Isotype	Rabbit IgG
Clone Names	RB29939
Calculated MW	54633
Antigen Region	107-135

Additional Information

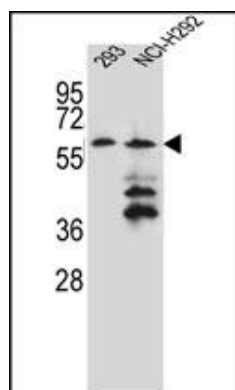
Gene ID	390999
Other Names	PRAME family member 12, PRAMEF12
Target/Specificity	This PRAMEF12 antibody is generated from rabbits immunized with a KLH conjugated synthetic peptide between 107-135 amino acids from the Central region of human PRAMEF12.
Dilution	WB~~1:1000 E~~Use at an assay dependent concentration.
Format	Purified polyclonal antibody supplied in PBS with 0.09% (W/V) sodium azide. This antibody is purified through a protein A column, followed by peptide affinity purification.
Storage	Maintain refrigerated at 2-8°C for up to 2 weeks. For long term storage store at -20°C in small aliquots to prevent freeze-thaw cycles.
Precautions	PRAMEF12 Antibody (Center) is for research use only and not for use in diagnostic or therapeutic procedures.

Protein Information

Name	PRAMEF12 (HGNC:22125)
------	---

References

Images



PRAMEF12 Antibody (Center) (Cat. #AP12129c) western blot analysis in 293,NCI-H292 cell line lysates (35ug/lane).This demonstrates the PRAMEF12 antibody detected the PRAMEF12 protein (arrow).

Please note: All products are 'FOR RESEARCH USE ONLY. NOT FOR USE IN DIAGNOSTIC OR THERAPEUTIC PROCEDURES'.