

# CT45A4/CT45A3/CT45A2/CT45A1/CT45A6 Antibody (Center)

Affinity Purified Rabbit Polyclonal Antibody (Pab)  
Catalog # AP12131c

## Product Information

---

Application	WB, E
Primary Accession	<a href="#">Q8N7B7</a>
Other Accession	<a href="#">Q8NHU0</a> , <a href="#">Q5HYN5</a> , <a href="#">Q5DJT8</a> , <a href="#">NP_001017438.1</a> , <a href="#">NP_001017436.1</a>
Reactivity	Human
Host	Rabbit
Clonality	Polyclonal
Isotype	Rabbit IgG
Clone Names	RB29956
Antigen Region	106-135

## Additional Information

---

Other Names	Cancer/testis antigen family 45 member A4/A6, Cancer/testis antigen 45-4/6, Cancer/testis antigen 45A4/45A6, CT45A4, CT45-4
Target/Specificity	This CT45A4/CT45A3/CT45A2/CT45A1/CT45A6 antibody is generated from rabbits immunized with a KLH conjugated synthetic peptide between 106-135 amino acids from the Central region of human CT45A4/CT45A3/CT45A2/CT45A1/CT45A6.
Dilution	WB~~1:1000 E~~Use at an assay dependent concentration.
Format	Purified polyclonal antibody supplied in PBS with 0.09% (W/V) sodium azide. This antibody is purified through a protein A column, followed by peptide affinity purification.
Storage	Maintain refrigerated at 2-8°C for up to 2 weeks. For long term storage store at -20°C in small aliquots to prevent freeze-thaw cycles.
Precautions	CT45A4/CT45A3/CT45A2/CT45A1/CT45A6 Antibody (Center) is for research use only and not for use in diagnostic or therapeutic procedures.

## Protein Information

---

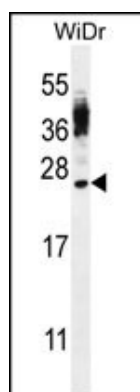
## References

---

Chen, Y.T., et al. Proc. Natl. Acad. Sci. U.S.A. 102(22):7940-7945(2005)

## Images

---



CT45A Antibody (Center) (Cat. #AP12131c) western blot analysis in WiDr cell line lysates (35ug/lane). This demonstrates the CT45A antibody detected the CT45A protein (arrow).

Please note: All products are 'FOR RESEARCH USE ONLY. NOT FOR USE IN DIAGNOSTIC OR THERAPEUTIC PROCEDURES'.