

MBD3L3 Antibody (C-term)

Affinity Purified Rabbit Polyclonal Antibody (Pab)

Catalog # AP12132b

Product Information

Application	IHC-P, IF, FC, WB, E
Primary Accession	A6NE82
Other Accession	A6NJ08 , A6NDZ8 , Q8NHZ7 , NP_001157897.1
Reactivity	Human
Host	Rabbit
Clonality	Polyclonal
Isotype	Rabbit IgG
Clone Names	RB29958
Calculated MW	23095
Antigen Region	156-184

Additional Information

Gene ID	653657
Other Names	Putative methyl-CpG-binding domain protein 3-like 3, MBD3-like protein 3, MBD3L3
Target/Specificity	This MBD3L3 antibody is generated from rabbits immunized with a KLH conjugated synthetic peptide between 156-184 amino acids from the C-terminal region of human MBD3L3.
Dilution	IHC-P~~1:100~500 IF~~1:10~50 FC~~1:10~50 WB~~1:1000 E~~Use at an assay dependent concentration.
Format	Purified polyclonal antibody supplied in PBS with 0.09% (W/V) sodium azide. This antibody is purified through a protein A column, followed by peptide affinity purification.
Storage	Maintain refrigerated at 2-8°C for up to 2 weeks. For long term storage store at -20°C in small aliquots to prevent freeze-thaw cycles.
Precautions	MBD3L3 Antibody (C-term) is for research use only and not for use in diagnostic or therapeutic procedures.

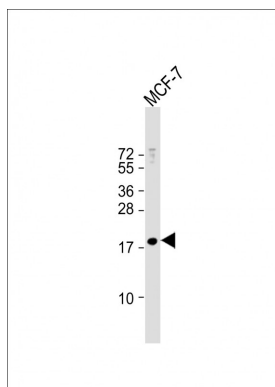
Protein Information

Name	MBD3L3
-------------	--------

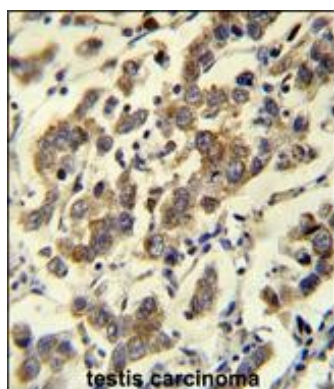
References

Grimwood, J., et al. Nature 428(6982):529-535(2004)

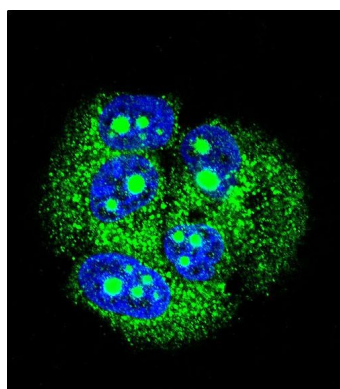
Images



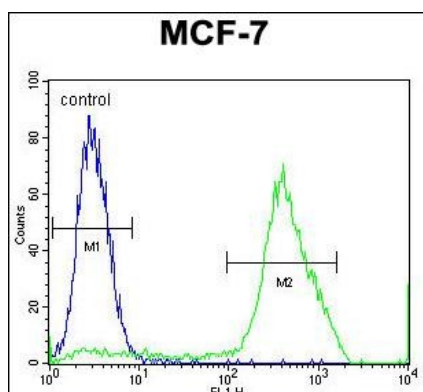
Anti-MBD3L3 Antibody (C-term) at 1:1000 dilution + MCF-7 whole cell lysate Lysates/proteins at 20 µg per lane. Secondary Goat Anti-Rabbit IgG, (H+L), Peroxidase conjugated at 1/10000 dilution. Predicted band size : 23 kDa Blocking/Dilution buffer: 5% NFDM/TBST.



MBD3L3 Antibody (C-term) (Cat. #AP12132b) immunohistochemistry analysis in formalin fixed and paraffin embedded human testis carcinoma followed by peroxidase conjugation of the secondary antibody and DAB staining. This data demonstrates the use of MBD3L3 Antibody (C-term) for immunohistochemistry. Clinical relevance has not been evaluated.



Confocal immunofluorescent analysis of MBD3L3 Antibody (C-term) (Cat.#AP12132b) with MCF-7 cell followed by Alexa Fluor 488-conjugated goat anti-rabbit IgG (green). DAPI was used to stain the cell nuclear (blue).



MBD3L3 Antibody (C-term) (Cat. #AP12132b) flow cytometric analysis of MCF-7 cells (right histogram) compared to a negative control cell (left histogram). FITC-conjugated goat-anti-rabbit secondary antibodies were used for the analysis.

Please note: All products are 'FOR RESEARCH USE ONLY. NOT FOR USE IN DIAGNOSTIC OR THERAPEUTIC PROCEDURES'.