

# OR2T8 Antibody (C-term)

Affinity Purified Rabbit Polyclonal Antibody (Pab)

Catalog # AP12137b

## Product Information

---

Application	WB, E
Primary Accession	<a href="#">A6NH00</a>
Other Accession	<a href="#">Q8NG76</a> , <a href="#">Q8NG77</a> , <a href="#">NP_001005522.1</a>
Reactivity	Human
Host	Rabbit
Clonality	Polyclonal
Isotype	Rabbit IgG
Clone Names	RB29996
Calculated MW	34659
Antigen Region	241-269

## Additional Information

---

Gene ID	343172
Other Names	Olfactory receptor 2T8, OR2T8, OR2T8P
Target/Specificity	This OR2T8 antibody is generated from rabbits immunized with a KLH conjugated synthetic peptide between 241-269 amino acids from the C-terminal region of human OR2T8.
Dilution	WB~~1:1000 E~~Use at an assay dependent concentration.
Format	Purified polyclonal antibody supplied in PBS with 0.09% (W/V) sodium azide. This antibody is purified through a protein A column, followed by peptide affinity purification.
Storage	Maintain refrigerated at 2-8°C for up to 2 weeks. For long term storage store at -20°C in small aliquots to prevent freeze-thaw cycles.
Precautions	OR2T8 Antibody (C-term) is for research use only and not for use in diagnostic or therapeutic procedures.

## Protein Information

---

Name	OR2T8
Synonyms	OR2T8P
Function	Odorant receptor.

**Cellular Location**

Cell membrane; Multi-pass membrane protein.

**Background**

---

Olfactory receptors interact with odorant molecules in the nose, to initiate a neuronal response that triggers the perception of a smell. The olfactory receptor proteins are members of a large family of G-protein-coupled receptors (GPCR) arising from single coding-exon genes. Olfactory receptors share a 7-transmembrane domain structure with many neurotransmitter and hormone receptors and are responsible for the recognition and G protein-mediated transduction of odorant signals. The olfactory receptor gene family is the largest in the genome. The nomenclature assigned to the olfactory receptor genes and proteins for this organism is independent of other organisms.

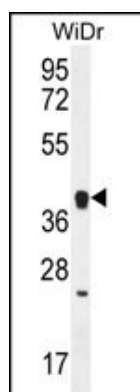
**References**

---

Fuchs, T., et al. Genomics 80(3):295-302(2002)

**Images**

---



OR2T8 Antibody (C-term) (Cat. #AP12137b) western blot analysis in WiDr cell line lysates (35ug/lane). This demonstrates the OR2T8 antibody detected the OR2T8 protein (arrow).

Please note: All products are 'FOR RESEARCH USE ONLY. NOT FOR USE IN DIAGNOSTIC OR THERAPEUTIC PROCEDURES'.