

ACTBL3 Antibody (N-term)

Affinity Purified Rabbit Polyclonal Antibody (Pab)

Catalog # AP12154a

Product Information

Application	WB, E
Primary Accession	Q9BYX7
Reactivity	Human
Host	Rabbit
Clonality	Polyclonal
Isotype	Rabbit IgG
Clone Names	RB31955
Calculated MW	42016
Antigen Region	30-58

Additional Information

Other Names	Putative beta-actin-like protein 3, Kappa-actin, POTE ankyrin domain family member K, POTEKP, ACTBL3
Target/Specificity	This ACTBL3 antibody is generated from rabbits immunized with a KLH conjugated synthetic peptide between 30-58 amino acids from the N-terminal region of human ACTBL3.
Dilution	WB~~1:1000 E~~Use at an assay dependent concentration.
Format	Purified polyclonal antibody supplied in PBS with 0.09% (W/V) sodium azide. This antibody is purified through a protein A column, followed by peptide affinity purification.
Storage	Maintain refrigerated at 2-8°C for up to 2 weeks. For long term storage store at -20°C in small aliquots to prevent freeze-thaw cycles.
Precautions	ACTBL3 Antibody (N-term) is for research use only and not for use in diagnostic or therapeutic procedures.

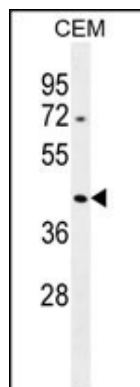
Protein Information

Name	POTEKP
Synonyms	ACTBL3
Cellular Location	Cytoplasm, cytoskeleton.
Tissue Location	Expressed in some hepatocellular carcinomas.

Background

Interacts with PFN1 and PFDN1. Does not interact with PFN2.

Images



ACTBL3 Antibody (N-term) (Cat. #AP12154a) western blot analysis in CEM cell line lysates (35ug/lane). This demonstrates the ACTBL3 antibody detected the ACTBL3 protein (arrow).

Please note: All products are 'FOR RESEARCH USE ONLY. NOT FOR USE IN DIAGNOSTIC OR THERAPEUTIC PROCEDURES'.