

PCYT1A Antibody (N-term)

Affinity Purified Rabbit Polyclonal Antibody (Pab)

Catalog # AP12169A

Product Information

Application	IHC-P, IF, WB, E
Primary Accession	P49585
Other Accession	P19836 , P49586 , P49584 , NP_005008.2
Reactivity	Human
Predicted	Hamster, Mouse, Rat
Host	Rabbit
Clonality	Polyclonal
Isotype	Rabbit IgG
Clone Names	RB32196
Calculated MW	41731
Antigen Region	27-54

Additional Information

Gene ID	5130
Other Names	Choline-phosphate cytidyltransferase A, CCT-alpha, CTP:phosphocholine cytidyltransferase A, CCT A, CT A, Phosphorylcholine transferase A, PCYT1A, CTPCT, PCYT1
Target/Specificity	This PCYT1A antibody is generated from rabbits immunized with a KLH conjugated synthetic peptide between 27-54 amino acids from the N-terminal region of human PCYT1A.
Dilution	IHC-P~~1:100~500 IF~~1:10~50 WB~~1:1000 E~~Use at an assay dependent concentration.
Format	Purified polyclonal antibody supplied in PBS with 0.09% (W/V) sodium azide. This antibody is purified through a protein A column, followed by peptide affinity purification.
Storage	Maintain refrigerated at 2-8°C for up to 2 weeks. For long term storage store at -20°C in small aliquots to prevent freeze-thaw cycles.
Precautions	PCYT1A Antibody (N-term) is for research use only and not for use in diagnostic or therapeutic procedures.

Protein Information

Name	PCYT1A
-------------	--------

Synonyms	CTPCT, PCYT1
Function	Catalyzes the key rate-limiting step in the CDP-choline pathway for phosphatidylcholine biosynthesis.
Cellular Location	Cytoplasm, cytosol {ECO:0000250 UniProtKB:P19836}. Membrane {ECO:0000250 UniProtKB:P19836}; Peripheral membrane protein {ECO:0000250 UniProtKB:P19836}. Endoplasmic reticulum membrane; Peripheral membrane protein {ECO:0000250 UniProtKB:P19836}. Nucleus Note=It can interconvert between an inactive cytosolic form and an active membrane-bound form. {ECO:0000250 UniProtKB:P19836}
Tissue Location	Brain, placenta, liver, fetal and adult lung.

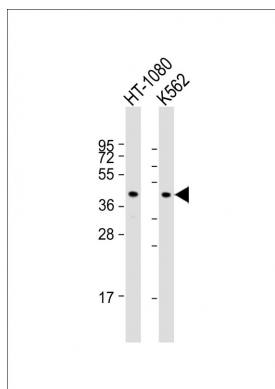
Background

PCYT1A controls phosphatidylcholine synthesis.

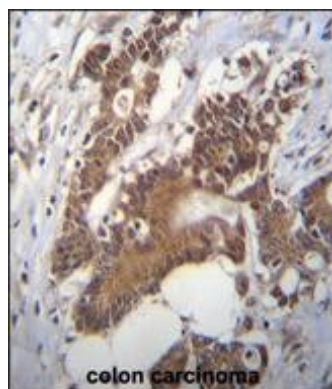
References

Mostowska, A., et al. J. Med. Genet. (2010) In press :
Mostowska, A., et al. Eur. J. Oral Sci. 118(4):325-332(2010)
Sugiyama, N., et al. Mol. Cell Proteomics 6(6):1103-1109(2007)
Olsen, J.V., et al. Cell 127(3):635-648(2006)
Olsen, J.V., et al. Cell 127(3):635-648(2006)

Images

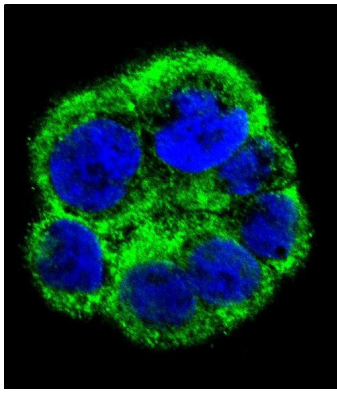


All lanes : Anti-PCYT1A Antibody (N-term) at 1:1000 dilution
Lane 1: HT-1080 whole cell lysate
Lane 2: K562 whole cell lysate
Lysates/proteins at 20 µg per lane.
Secondary Goat Anti-Rabbit IgG, (H+L), Peroxidase conjugated at 1/10000 dilution. Predicted band size : 42 kDa
Blocking/Dilution buffer: 5% NFDM/TBST.



PCYT1A Antibody (N-term) (Cat. #AP12169a) immunohistochemistry analysis in formalin fixed and paraffin embedded human colon carcinoma followed by peroxidase conjugation of the secondary antibody and DAB staining. This data demonstrates the use of PCYT1A Antibody (N-term) for immunohistochemistry. Clinical relevance has not been evaluated.

Confocal immunofluorescent analysis of PCYT1A Antibody (N-term) (Cat. #AP12169a) with WiDr cell followed by Alexa Fluor 488-conjugated goat anti-rabbit IgG (green). DAPI



was used to stain the cell nuclear (blue).

Please note: All products are 'FOR RESEARCH USE ONLY. NOT FOR USE IN DIAGNOSTIC OR THERAPEUTIC PROCEDURES'.