

STX16 Antibody (C-term)

Affinity Purified Rabbit Polyclonal Antibody (Pab)

Catalog # AP12179b

Product Information

Application	WB, FC, E
Primary Accession	O14662
Other Accession	Q8BVI5 , NP_001128245.1 , NP_001001433.1 , NP_003754.2
Reactivity	Human
Predicted	Mouse
Host	Rabbit
Clonality	Polyclonal
Isotype	Rabbit IgG
Clone Names	RB32221
Calculated MW	37031
Antigen Region	247-274

Additional Information

Gene ID	8675
Other Names	Syntaxin-16, Syn16, STX16
Target/Specificity	This STX16 antibody is generated from rabbits immunized with a KLH conjugated synthetic peptide between 247-274 amino acids from the C-terminal region of human STX16.
Dilution	WB~~1:1000 FC~~1:10~50 E~~Use at an assay dependent concentration.
Format	Purified polyclonal antibody supplied in PBS with 0.09% (W/V) sodium azide. This antibody is purified through a protein A column, followed by peptide affinity purification.
Storage	Maintain refrigerated at 2-8°C for up to 2 weeks. For long term storage store at -20°C in small aliquots to prevent freeze-thaw cycles.
Precautions	STX16 Antibody (C-term) is for research use only and not for use in diagnostic or therapeutic procedures.

Protein Information

Name	STX16
Function	SNARE involved in vesicular transport from the late endosomes to the trans-Golgi network.

Cellular Location	Golgi apparatus membrane; Single-pass type IV membrane protein
Tissue Location	Ubiquitous.

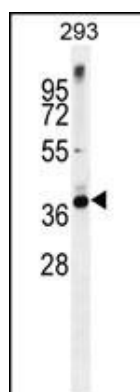
Background

This gene encodes a protein that is a member of the syntaxin or t-SNARE (target-SNAP receptor) family. These proteins are found on cell membranes and serve as the targets for V-SNARES (vesicle-SNAP receptors) permitting specific synaptic vesicle docking and fusion. A microdeletion in the region of chromosome 20 where this gene is located has been associated with pseudohypoparathyroidism type Ib. Multiple transcript variants encoding different isoforms have been found for this gene.

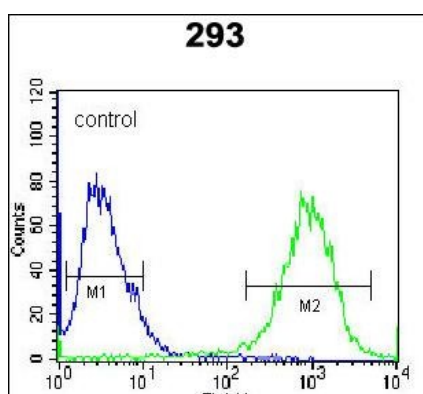
References

Song, S.J., et al. Cancer Res. 69(22):8540-8544(2009)
 Ganley, I.G., et al. J. Cell Biol. 180(1):159-172(2008)
 Chua, C.E., et al. Mol. Membr. Biol. 25(1):35-45(2008)
 Amessou, M., et al. J. Cell. Sci. 120 (PT 8), 1457-1468 (2007) :
 Linglart, A., et al. Am. J. Hum. Genet. 76(5):804-814(2005)

Images



STX16 Antibody (C-term) (Cat. #AP12179b) western blot analysis in 293 cell line lysates (35ug/lane). This demonstrates the STX16 antibody detected the STX16 protein (arrow).



STX16 Antibody (C-term) (Cat. #AP12179b) flow cytometric analysis of 293 cells (right histogram) compared to a negative control cell (left histogram). FITC-conjugated goat-anti-rabbit secondary antibodies were used for the analysis.

Please note: All products are 'FOR RESEARCH USE ONLY. NOT FOR USE IN DIAGNOSTIC OR THERAPEUTIC PROCEDURES'.