

CCNYL3 Antibody (N-term)

Affinity Purified Rabbit Polyclonal Antibody (Pab)

Catalog # AP12215a

Product Information

Application	WB, FC, E
Primary Accession	P0C7X3
Other Accession	XP_930958.4
Reactivity	Human
Host	Rabbit
Clonality	Polyclonal
Isotype	Rabbit IgG
Clone Names	RB29979
Calculated MW	39078
Antigen Region	46-74

Additional Information

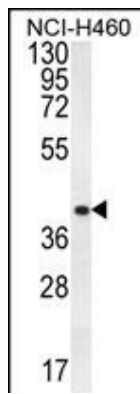
Other Names	Putative cyclin-Y-like protein 3, CCNYL3
Target/Specificity	This CCNYL3 antibody is generated from rabbits immunized with a KLH conjugated synthetic peptide between 46-74 amino acids from the N-terminal region of human CCNYL3.
Dilution	WB~~1:1000 FC~~1:10~50 E~~Use at an assay dependent concentration.
Format	Purified polyclonal antibody supplied in PBS with 0.09% (W/V) sodium azide. This antibody is purified through a protein A column, followed by peptide affinity purification.
Storage	Maintain refrigerated at 2-8°C for up to 2 weeks. For long term storage store at -20°C in small aliquots to prevent freeze-thaw cycles.
Precautions	CCNYL3 Antibody (N-term) is for research use only and not for use in diagnostic or therapeutic procedures.

Protein Information

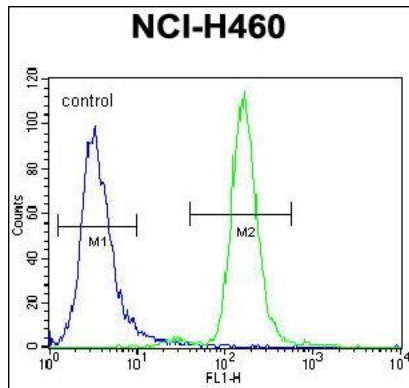
Name	CCNYL3
-------------	--------

Images

CCNYL3 Antibody (N-term) (Cat. #AP12215a) western blot analysis in NCI-H460 cell line lysates (35ug/lane).This



demonstrates the CCNYL3 antibody detected the CCNYL3 protein (arrow).



CCNYL3 Antibody (N-term) (Cat. #AP12215a) flow cytometric analysis of NCI-H460 cells (right histogram) compared to a negative control cell (left histogram). FITC-conjugated goat-anti-rabbit secondary antibodies were used for the analysis.

Please note: All products are 'FOR RESEARCH USE ONLY. NOT FOR USE IN DIAGNOSTIC OR THERAPEUTIC PROCEDURES'.