

UNQ3029 Antibody (Center)

Affinity Purified Rabbit Polyclonal Antibody (Pab)

Catalog # AP12221c

Product Information

| | |
|-------------------|--------------------------------|
| Application | WB, FC, E |
| Primary Accession | Q6UWF6 |
| Other Accession | XP_001722754.1 |
| Reactivity | Human |
| Host | Rabbit |
| Clonality | Polyclonal |
| Isotype | Rabbit IgG |
| Clone Names | RB31011 |
| Antigen Region | 62-91 |

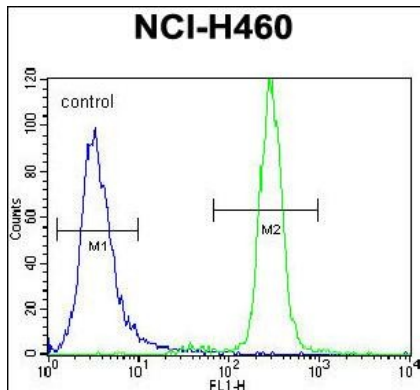
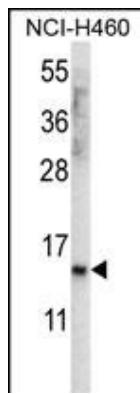
Additional Information

| | |
|--------------------|--|
| Other Names | Putative uncharacterized protein UNQ3029/PRO9830, hypothetical protein |
| Target/Specificity | This UNQ3029 antibody is generated from rabbits immunized with a KLH conjugated synthetic peptide between 62-91 amino acids from the Central region of human UNQ3029. |
| Dilution | WB~~1:1000 FC~~1:10~50 E~~Use at an assay dependent concentration. |
| Format | Purified polyclonal antibody supplied in PBS with 0.09% (W/V) sodium azide. This antibody is purified through a protein A column, followed by peptide affinity purification. |
| Storage | Maintain refrigerated at 2-8°C for up to 2 weeks. For long term storage store at -20°C in small aliquots to prevent freeze-thaw cycles. |
| Precautions | UNQ3029 Antibody (Center) is for research use only and not for use in diagnostic or therapeutic procedures. |

Protein Information

Images

UNQ3029 Antibody (Center) (Cat. #AP12221c) western blot analysis in NCI-H460 cell line lysates (35ug/lane). This demonstrates the UNQ3029 antibody detected the UNQ3029 protein (arrow).



UNQ3029 Antibody (Center) (Cat. #AP12221c) flow cytometric analysis of NCI-H460 cells (right histogram) compared to a negative control cell (left histogram). FITC-conjugated goat-anti-rabbit secondary antibodies were used for the analysis.

Please note: All products are 'FOR RESEARCH USE ONLY. NOT FOR USE IN DIAGNOSTIC OR THERAPEUTIC PROCEDURES'.