

## STX5 Antibody (Center)

Affinity Purified Rabbit Polyclonal Antibody (Pab)

Catalog # AP12268c

### Product Information

---

<b>Application</b>	WB, E
<b>Primary Accession</b>	<a href="#">Q13190</a>
<b>Other Accession</b>	<a href="#">Q08DB5</a> , <a href="#">NP_003155.2</a>
<b>Reactivity</b>	Human, Mouse
<b>Predicted</b>	Bovine
<b>Host</b>	Rabbit
<b>Clonality</b>	Polyclonal
<b>Isotype</b>	Rabbit IgG
<b>Clone Names</b>	RB17857
<b>Calculated MW</b>	39673
<b>Antigen Region</b>	180-209

### Additional Information

---

<b>Gene ID</b>	6811
<b>Other Names</b>	Syntaxin-5, STX5, STX5A
<b>Target/Specificity</b>	This STX5 antibody is generated from rabbits immunized with a KLH conjugated synthetic peptide between 180-209 amino acids from the Central region of human STX5.
<b>Dilution</b>	WB~~1:1000 E~~Use at an assay dependent concentration.
<b>Format</b>	Purified polyclonal antibody supplied in PBS with 0.09% (W/V) sodium azide. This antibody is purified through a protein A column, followed by peptide affinity purification.
<b>Storage</b>	Maintain refrigerated at 2-8°C for up to 2 weeks. For long term storage store at -20°C in small aliquots to prevent freeze-thaw cycles.
<b>Precautions</b>	STX5 Antibody (Center) is for research use only and not for use in diagnostic or therapeutic procedures.

### Protein Information

---

<b>Name</b>	STX5
<b>Synonyms</b>	STX5A
<b>Function</b>	Mediates endoplasmic reticulum to Golgi transport. Together with

p115/USO1 and GM130/GOLGA2, involved in vesicle tethering and fusion at the cis-Golgi membrane to maintain the stacked and inter- connected structure of the Golgi apparatus.

## Cellular Location

Endoplasmic reticulum-Golgi intermediate compartment membrane {ECO:0000250|UniProtKB:Q08851}; Single-pass type IV membrane protein. Golgi apparatus membrane. Note=Localizes throughout the Golgi apparatus, but most abundant in the cis-most cisternae

## Background

---

STX5 mediates endoplasmic reticulum to Golgi transport (By similarity).

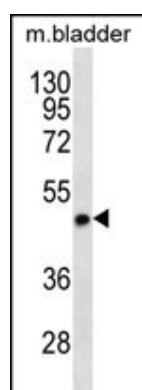
## References

---

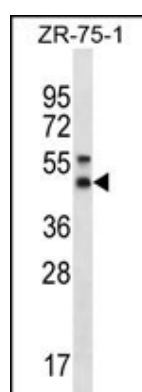
Laufman, O., et al. EMBO J. 28(14):2006-2017(2009)  
Diao, A., et al. J. Biol. Chem. 283(11):6957-6967(2008)  
Amessou, M., et al. J. Cell. Sci. 120 (PT 8), 1457-1468 (2007) :  
Wang, A.G., et al. Biochem. Biophys. Res. Commun. 345(3):1022-1032(2006)  
Suga, K., et al. FEBS Lett. 579(20):4226-4234(2005)

## Images

---



STX5 Antibody (Center) (Cat. #AP12268c) western blot analysis in mouse bladder tissue lysates (35ug/lane). This demonstrates the STX5 antibody detected the STX5 protein (arrow).



STX5 Antibody (Center) (Cat. #AP12268c) western blot analysis in ZR-75-1 cell line lysates (35ug/lane). This demonstrates the STX5 antibody detected the STX5 protein (arrow).

Please note: All products are 'FOR RESEARCH USE ONLY. NOT FOR USE IN DIAGNOSTIC OR THERAPEUTIC PROCEDURES'.