

# FSTL3 Antibody (C-term)

Affinity Purified Rabbit Polyclonal Antibody (Pab)

Catalog # AP12300b

## Product Information

---

<b>Application</b>	WB, IHC-P, E
<b>Primary Accession</b>	<a href="#">O95633</a>
<b>Other Accession</b>	<a href="#">NP_005851.1</a>
<b>Reactivity</b>	Human
<b>Host</b>	Rabbit
<b>Clonality</b>	Polyclonal
<b>Isotype</b>	Rabbit IgG
<b>Clone Names</b>	RB31074
<b>Calculated MW</b>	27663
<b>Antigen Region</b>	229-258

## Additional Information

---

<b>Gene ID</b>	10272
<b>Other Names</b>	Follistatin-related protein 3, Follistatin-like protein 3, Follistatin-related gene protein, FSTL3, FLRG
<b>Target/Specificity</b>	This FSTL3 antibody is generated from rabbits immunized with a KLH conjugated synthetic peptide between 229-258 amino acids from the C-terminal region of human FSTL3.
<b>Dilution</b>	WB~~1:1000 IHC-P~~1:100~500 E~~Use at an assay dependent concentration.
<b>Format</b>	Purified polyclonal antibody supplied in PBS with 0.09% (W/V) sodium azide. This antibody is purified through a protein A column, followed by peptide affinity purification.
<b>Storage</b>	Maintain refrigerated at 2-8°C for up to 2 weeks. For long term storage store at -20°C in small aliquots to prevent freeze-thaw cycles.
<b>Precautions</b>	FSTL3 Antibody (C-term) is for research use only and not for use in diagnostic or therapeutic procedures.

## Protein Information

---

<b>Name</b>	FSTL3
<b>Synonyms</b>	FLRG
<b>Function</b>	Isoform 1 or the secreted form is a binding and antagonizing protein for

members of the TGF-beta family, such as activin, BMP2 and MSTN. Inhibits activin A-, activin B-, BMP2- and MSDT-induced cellular signaling; more effective on activin A than on activin B. Involved in bone formation; inhibits osteoclast differentiation. Involved in hematopoiesis; involved in differentiation of hemopoietic progenitor cells, increases hematopoietic cell adhesion to fibronectin and seems to contribute to the adhesion of hematopoietic precursor cells to the bone marrow stroma. Isoform 2 or the nuclear form is probably involved in transcriptional regulation via interaction with MLLT10.

<b>Cellular Location</b>	[Isoform 1]: Secreted.
<b>Tissue Location</b>	Expressed in a wide range of tissues.

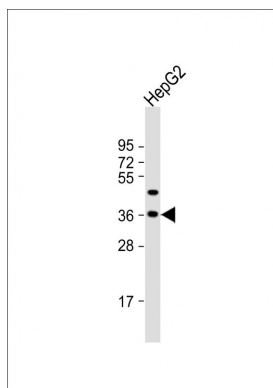
## Background

Follistatin-like 3 is a secreted glycoprotein of the follistatin-module-protein family. It may have a role in leukemogenesis.

## References

Miron, P., et al. Prenat. Diagn. 30(3):224-228(2010)  
Thadhani, R., et al. Diabetes Care 33(3):664-669(2010)  
Bloise, E., et al. BMC Cancer 9, 320 (2009) :  
Stamler, R., et al. J. Biol. Chem. 283(47):32831-32838(2008)  
Lara-Pezzi, E., et al. Endocrinology 149(11):5822-5827(2008)

## Images



Anti-FSTL3 Antibody (C-term) at 1:2000 dilution + HepG2 whole cell lysate Lysates/proteins at 20 µg per lane. Secondary Goat Anti-Rabbit IgG, (H+L), Peroxidase conjugated at 1/10000 dilution. Predicted band size : 28 kDa Blocking/Dilution buffer: 5% NFDM/TBST.



FSTL3 Antibody (C-term) (Cat. #AP12300b) immunohistochemistry analysis in formalin fixed and paraffin embedded human testis tissue followed by peroxidase conjugation of the secondary antibody and DAB staining. This data demonstrates the use of FSTL3 Antibody (C-term) for immunohistochemistry. Clinical relevance has not been evaluated.