

# CALU Antibody (C-term)

Affinity Purified Rabbit Polyclonal Antibody (Pab)

Catalog # AP12308b

## Product Information

---

<b>Application</b>	WB, IHC-P, E
<b>Primary Accession</b>	<a href="#">O43852</a>
<b>Other Accession</b>	<a href="#">O35783</a> , <a href="#">Q6XLQ7</a> , <a href="#">O35887</a> , <a href="#">Q3T0K1</a> , <a href="#">NP_001124146.1</a> , <a href="#">NP_001210.1</a>
<b>Reactivity</b>	Human
<b>Predicted</b>	Bovine, Mouse, Rabbit, Rat
<b>Host</b>	Rabbit
<b>Clonality</b>	Polyclonal
<b>Isotype</b>	Rabbit IgG
<b>Clone Names</b>	RB31090
<b>Calculated MW</b>	37107
<b>Antigen Region</b>	217-246

## Additional Information

---

<b>Gene ID</b>	813
<b>Other Names</b>	Calumenin, Crocalbin, IEF SSP 9302, CALU
<b>Target/Specificity</b>	This CALU antibody is generated from rabbits immunized with a KLH conjugated synthetic peptide between 217-246 amino acids from the C-terminal region of human CALU.
<b>Dilution</b>	WB~~1:1000 IHC-P~~1:100~500 E~~Use at an assay dependent concentration.
<b>Format</b>	Purified polyclonal antibody supplied in PBS with 0.05% (V/V) Proclin 300. This antibody is purified through a protein A column, followed by peptide affinity purification.
<b>Storage</b>	Maintain refrigerated at 2-8°C for up to 2 weeks. For long term storage store at -20°C in small aliquots to prevent freeze-thaw cycles.
<b>Precautions</b>	CALU Antibody (C-term) is for research use only and not for use in diagnostic or therapeutic procedures.

## Protein Information

---

<b>Name</b>	CALU
<b>Function</b>	Involved in regulation of vitamin K-dependent carboxylation of multiple N-terminal glutamate residues. Seems to inhibit gamma- carboxylase GGCX. Binds 7 calcium ions with a low affinity (By similarity).

<b>Cellular Location</b>	Endoplasmic reticulum membrane. Golgi apparatus. Secreted. Melanosome. Sarcoplasmic reticulum lumen. Note=Identified by mass spectrometry in melanosome fractions from stage I to stage IV.
<b>Tissue Location</b>	Ubiquitously expressed. Expressed at high levels in heart, placenta and skeletal muscle, at lower levels in lung, kidney and pancreas and at very low levels in brain and liver

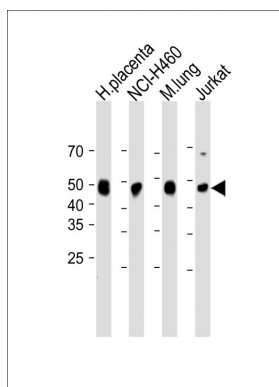
## Background

The product of this gene is a calcium-binding protein localized in the endoplasmic reticulum (ER) and it is involved in such ER functions as protein folding and sorting. This protein belongs to a family of multiple EF-hand proteins (CERC) that include reticulocalbin, ERC-55, and Cab45 and the product of this gene. Alternatively spliced transcript variants encoding different isoforms have been identified.

## References

Bailey, S.D., et al. Diabetes Care 33(10):2250-2253(2010)  
 Carlquist, J.F., et al. J. Thromb. Thrombolysis 30(3):358-364(2010)  
 Hernandez-Romero, D., et al. Ann. Med. 42(6):439-446(2010)  
 Harada, T., et al. Thromb. Res. 126(3):183-190(2010)  
 Voora, D., et al. Clin. Pharmacol. Ther. 87(4):445-451(2010)

## Images



All lanes: Anti-CALU Antibody (C-term) at 1:1000 dilution  
 Lane 1: Human placenta lysate Lane 2: NCI-H460 whole cell lysate Lane 3: Mouse lung lysate Lane 4: Jurkat whole cell lysate  
 Lysates/proteins at 20 µg per lane. Secondary: Goat Anti-Rabbit IgG, (H+L), Peroxidase conjugated (ASP1615) at 1/15000 dilution. Observed band size: 47 KDa  
 Blocking/Dilution buffer: 5% NFDM/TBST.

Please note: All products are 'FOR RESEARCH USE ONLY. NOT FOR USE IN DIAGNOSTIC OR THERAPEUTIC PROCEDURES'.