

PDCD1LG2 Antibody (N-term)

Affinity Purified Rabbit Polyclonal Antibody (Pab)

Catalog # AP12309a

Product Information

Application	WB, IHC-P, E
Primary Accession	Q9BQ51
Other Accession	NP_079515.2
Reactivity	Human, Mouse
Host	Rabbit
Clonality	Polyclonal
Isotype	Rabbit IgG
Clone Names	RB31095
Calculated MW	30957
Antigen Region	46-75

Additional Information

Gene ID	80380
Other Names	Programmed cell death 1 ligand 2, PD-1 ligand 2, PD-L2, PDCD1 ligand 2, Programmed death ligand 2, Butyrophilin B7-DC, B7-DC, CD273, PDCD1LG2, B7DC, CD273, PDCD1L2, PDL2
Target/Specificity	This PDCD1LG2 antibody is generated from rabbits immunized with a KLH conjugated synthetic peptide between 46-75 amino acids from the N-terminal region of human PDCD1LG2.
Dilution	WB~~1:1000 IHC-P~~1:100~500 E~~Use at an assay dependent concentration.
Format	Purified polyclonal antibody supplied in PBS with 0.09% (W/V) sodium azide. This antibody is purified through a protein A column, followed by peptide affinity purification.
Storage	Maintain refrigerated at 2-8°C for up to 2 weeks. For long term storage store at -20°C in small aliquots to prevent freeze-thaw cycles.
Precautions	PDCD1LG2 Antibody (N-term) is for research use only and not for use in diagnostic or therapeutic procedures.

Protein Information

Name	PDCD1LG2
Synonyms	B7DC, CD273, PDCD1L2, PDL2

Function	Involved in the costimulatory signal, essential for T-cell proliferation and IFNG production in a PDCD1-independent manner. Interaction with PDCD1 inhibits T-cell proliferation by blocking cell cycle progression and cytokine production (By similarity).
Cellular Location	[Isoform 3]: Secreted [Isoform 1]: Cell membrane; Single-pass type I membrane protein {ECO:0000250 UniProtKB:Q9WUL5, ECO:0000305 PubMed:15340161}
Tissue Location	Highly expressed in heart, placenta, pancreas, lung and liver and weakly expressed in spleen, lymph nodes and thymus

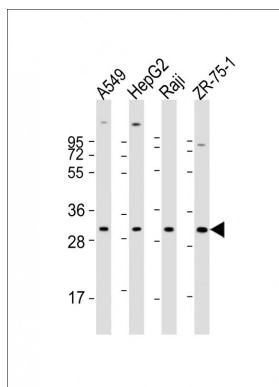
Background

PDCD1LG2 is involved in the costimulatory signal, essential for T-cell proliferation and IFNG production in a PDCD1-independent manner. Interaction with PDCD1 inhibits T-cell proliferation by blocking cell cycle progression and cytokine production (By similarity).

References

Ellis, J.S., et al. J. Immunol. 185(6):3149-3157(2010)
Pena-Cruz, V., et al. J. Invest. Dermatol. 130(9):2222-2230(2010)
Ghiotto, M., et al. Int. Immunol. 22(8):651-660(2010)
Ishizaki, Y., et al. Hum. Genet. (2010) In press :
Kassel, R., et al. Hepatology 50(5):1625-1637(2009)

Images



All lanes : Anti-PDCD1LG2 Antibody (N-term) at 1:1000-1:2000 dilution
Lane 1: A549 whole cell lysate
Lane 2: HepG2 whole cell lysate
Lane 3: Raji whole cell lysate
Lane 4: ZR-75-1 whole cell lysate
Lysates/proteins at 20 µg per lane. Secondary Goat Anti-Rabbit IgG, (H+L), Peroxidase conjugated at 1/10000 dilution. Predicted band size : 31 kDa
Blocking/Dilution buffer: 5% NFDM/TBST.

Please note: All products are 'FOR RESEARCH USE ONLY. NOT FOR USE IN DIAGNOSTIC OR THERAPEUTIC PROCEDURES'.