

EVPLL Antibody (Center)

Affinity Purified Rabbit Polyclonal Antibody (Pab)

Catalog # AP12312c

Product Information

Application	IHC-P, WB, E
Primary Accession	A8MZ36
Other Accession	NP_001138599.1
Reactivity	Human
Host	Rabbit
Clonality	Polyclonal
Isotype	Rabbit IgG
Clone Names	RB31164
Calculated MW	33953
Antigen Region	118-146

Additional Information

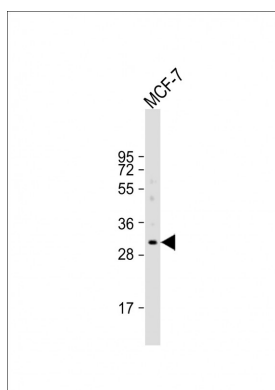
Gene ID	645027
Other Names	Envoplakin-like protein, EVPLL
Target/Specificity	This EVPLL antibody is generated from rabbits immunized with a KLH conjugated synthetic peptide between 118-146 amino acids from the Central region of human EVPLL.
Dilution	IHC-P~~1:100~500 WB~~1:1000 E~~Use at an assay dependent concentration.
Format	Purified polyclonal antibody supplied in PBS with 0.09% (W/V) sodium azide. This antibody is purified through a protein A column, followed by peptide affinity purification.
Storage	Maintain refrigerated at 2-8°C for up to 2 weeks. For long term storage store at -20°C in small aliquots to prevent freeze-thaw cycles.
Precautions	EVPLL Antibody (Center) is for research use only and not for use in diagnostic or therapeutic procedures.

Protein Information

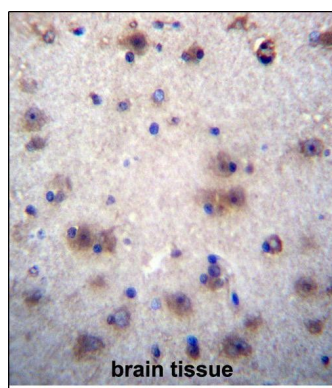
Name	EVPLL
-------------	-------

References

Images



Anti-EVPLL Antibody (Center) at 1:1000 dilution + MCF-7 whole cell lysate Lysates/proteins at 20 µg per lane. Secondary Goat Anti-Rabbit IgG, (H+L), Peroxidase conjugated at 1/10000 dilution. Predicted band size : 34 kDa Blocking/Dilution buffer: 5% NFDM/TBST.



EVPLL Antibody (Center) (Cat. #AP12312c) immunohistochemistry analysis in formalin fixed and paraffin embedded human brain tissue followed by peroxidase conjugation of the secondary antibody and DAB staining. This data demonstrates the use of EVPLL Antibody (Center) for immunohistochemistry. Clinical relevance has not been evaluated.

Please note: All products are 'FOR RESEARCH USE ONLY. NOT FOR USE IN DIAGNOSTIC OR THERAPEUTIC PROCEDURES'.