

KRTAP25-1 Antibody (C-term)

Affinity Purified Rabbit Polyclonal Antibody (Pab)

Catalog # AP12354b

Product Information

Application	WB, FC, E
Primary Accession	Q3LHN0
Other Accession	NP_001122070.1
Reactivity	Human
Host	Rabbit
Clonality	Polyclonal
Isotype	Rabbit IgG
Clone Names	RB31185
Calculated MW	11738
Antigen Region	73-102

Additional Information

Gene ID	100131902
Other Names	Keratin-associated protein 25-1, KRTAP25-1, KAP251
Target/Specificity	This KRTAP25-1 antibody is generated from rabbits immunized with a KLH conjugated synthetic peptide between 73-102 amino acids from the C-terminal region of human KRTAP25-1.
Dilution	WB~~1:1000 FC~~1:10~50 E~~Use at an assay dependent concentration.
Format	Purified polyclonal antibody supplied in PBS with 0.09% (W/V) sodium azide. This antibody is purified through a protein A column, followed by peptide affinity purification.
Storage	Maintain refrigerated at 2-8°C for up to 2 weeks. For long term storage store at -20°C in small aliquots to prevent freeze-thaw cycles.
Precautions	KRTAP25-1 Antibody (C-term) is for research use only and not for use in diagnostic or therapeutic procedures.

Protein Information

Name	KRTAP25-1
Synonyms	KAP25.1
Function	In the hair cortex, hair keratin intermediate filaments are embedded in an interfilamentous matrix, consisting of hair keratin- associated proteins

(KRTAP), which are essential for the formation of a rigid and resistant hair shaft through their extensive disulfide bond cross-linking with abundant cysteine residues of hair keratins. The matrix proteins include the high-sulfur and high-glycine-tyrosine keratins (By similarity).

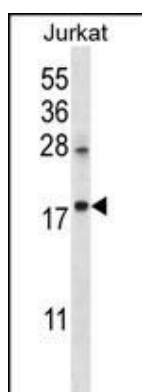
Background

In the hair cortex, hair keratin intermediate filaments are embedded in an interfilamentous matrix, consisting of hair keratin-associated proteins (KRTAP), which are essential for the formation of a rigid and resistant hair shaft through their extensive disulfide bond cross-linking with abundant cysteine residues of hair keratins. The matrix proteins include the high-sulfur and high-glycine-tyrosine keratins (By similarity).

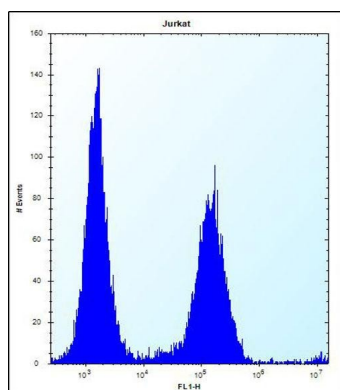
References

Hattori, M., et al. Nature 405(6784):311-319(2000)

Images



KRTAP25-1 Antibody (C-term) (Cat. #AP12354b) western blot analysis in Jurkat cell line lysates (35ug/lane). This demonstrates the KRTAP25-1 antibody detected the KRTAP25-1 protein (arrow).



KRTAP25-1 Antibody (C-term) (Cat. #AP12354b) flow cytometric analysis of Jurkat cells (right histogram) compared to a negative control cell (left histogram). FITC-conjugated donkey-anti-rabbit secondary antibodies were used for the analysis.

Please note: All products are 'FOR RESEARCH USE ONLY. NOT FOR USE IN DIAGNOSTIC OR THERAPEUTIC PROCEDURES'.