

ZNF417 Antibody (Center)

Affinity Purified Rabbit Polyclonal Antibody (Pab)

Catalog # AP12356c

Product Information

Application	WB, IHC-P, E
Primary Accession	Q8TAU3
Other Accession	Q96SQ5 , NP_689688.2
Reactivity	Human
Host	Rabbit
Clonality	Polyclonal
Isotype	Rabbit IgG
Clone Names	RB31200
Calculated MW	65733
Antigen Region	136-164

Additional Information

Gene ID	147687
Other Names	Zinc finger protein 417, ZNF417
Target/Specificity	This ZNF417 antibody is generated from rabbits immunized with a KLH conjugated synthetic peptide between 136-164 amino acids from the Central region of human ZNF417.
Dilution	WB~~1:1000 IHC-P~~1:100~500 E~~Use at an assay dependent concentration.
Format	Purified polyclonal antibody supplied in PBS with 0.09% (W/V) sodium azide. This antibody is purified through a protein A column, followed by peptide affinity purification.
Storage	Maintain refrigerated at 2-8°C for up to 2 weeks. For long term storage store at -20°C in small aliquots to prevent freeze-thaw cycles.
Precautions	ZNF417 Antibody (Center) is for research use only and not for use in diagnostic or therapeutic procedures.

Protein Information

Name	ZNF417
Function	May be involved in transcriptional regulation.
Cellular Location	Nucleus.

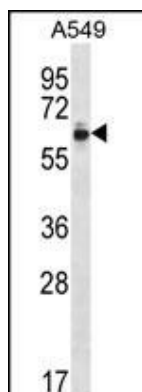
Background

ZNF417 may be involved in transcriptional regulation.

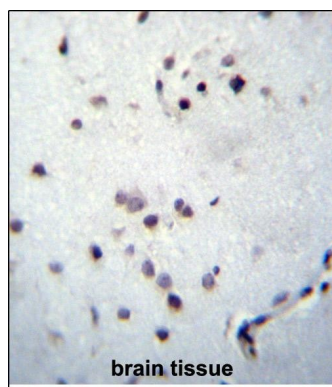
References

Suzuki, Y., et al. Genome Res. 14(9):1711-1718(2004)

Images



ZNF417 Antibody (Center) (Cat. #AP12356c) western blot analysis in A549 cell line lysates (35ug/lane). This demonstrates the ZNF417 antibody detected the ZNF417 protein (arrow).



ZNF417 Antibody (Center) (Cat. #AP12356c) immunohistochemistry analysis in formalin fixed and paraffin embedded human brain tissue followed by peroxidase conjugation of the secondary antibody and DAB staining. This data demonstrates the use of ZNF417 Antibody (Center) for immunohistochemistry. Clinical relevance has not been evaluated.

Please note: All products are 'FOR RESEARCH USE ONLY. NOT FOR USE IN DIAGNOSTIC OR THERAPEUTIC PROCEDURES'.