

ESPNL Antibody (C-term)

Affinity Purified Rabbit Polyclonal Antibody (Pab)

Catalog # AP12361b

Product Information

Application	WB, E
Primary Accession	Q6ZVH7
Other Accession	NP_919288.2
Reactivity	Human, Mouse
Host	Rabbit
Clonality	Polyclonal
Isotype	Rabbit IgG
Clone Names	RB31214
Calculated MW	108132
Antigen Region	903-932

Additional Information

Gene ID	339768
Other Names	Espin-like protein, ESPNL
Target/Specificity	This ESPNL antibody is generated from rabbits immunized with a KLH conjugated synthetic peptide between 903-932 amino acids from the C-terminal region of human ESPNL.
Dilution	WB~~1:1000 E~~Use at an assay dependent concentration.
Format	Purified polyclonal antibody supplied in PBS with 0.09% (W/V) sodium azide. This antibody is purified through a protein A column, followed by peptide affinity purification.
Storage	Maintain refrigerated at 2-8°C for up to 2 weeks. For long term storage store at -20°C in small aliquots to prevent freeze-thaw cycles.
Precautions	ESPNL Antibody (C-term) is for research use only and not for use in diagnostic or therapeutic procedures.

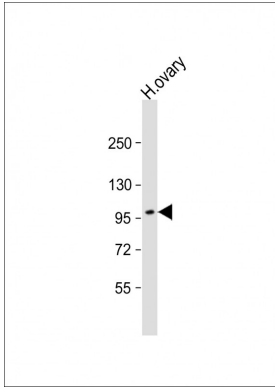
Protein Information

Name	ESPNL
Function	Binds to but does not cross-link actin. Required for the formation and maintenance of inner ear hair cell stereocilia and staircase formation. Essential for normal hearing.

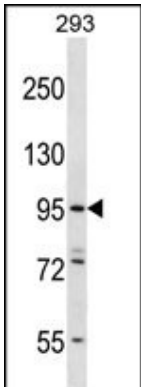
References

Clark, H.F., et al. Genome Res. 13(10):2265-2270(2003)

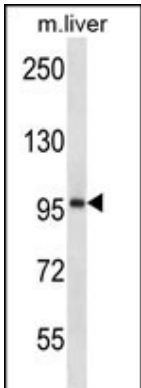
Images



Anti-ESPNL Antibody (C-term) at 1:500 dilution + human ovary lysate Lysates/proteins at 20 µg per lane. Secondary Goat Anti-Rabbit IgG, (H+L), Peroxidase conjugated at 1/10000 dilution. Predicted band size : 108 kDa Blocking/Dilution buffer: 5% NFDM/TBST.



ESPNL Antibody (C-term) (Cat. #AP12361b) western blot analysis in 293 cell line lysates (35ug/lane).This demonstrates the ESPNL antibody detected the ESPNL protein (arrow).



ESPNL Antibody (C-term) (Cat. #AP12361b) western blot analysis in mouse liver tissue lysates (35ug/lane).This demonstrates the ESPNL antibody detected the ESPNL protein (arrow).

Please note: All products are 'FOR RESEARCH USE ONLY. NOT FOR USE IN DIAGNOSTIC OR THERAPEUTIC PROCEDURES'.