

# NBPF5 Antibody (C-term)

Affinity Purified Rabbit Polyclonal Antibody (Pab)

Catalog # AP12364b

## Product Information

---

<b>Application</b>	WB, FC, E
<b>Primary Accession</b>	<a href="#">Q86XG9</a>
<b>Other Accession</b>	<a href="#">Q5VWK0</a> , <a href="#">Q96M43</a> , <a href="#">XP_001714524.1</a>
<b>Reactivity</b>	Human
<b>Host</b>	Rabbit
<b>Clonality</b>	Polyclonal
<b>Isotype</b>	Rabbit IgG
<b>Clone Names</b>	RB31222
<b>Calculated MW</b>	40546
<b>Antigen Region</b>	263-291

## Additional Information

---

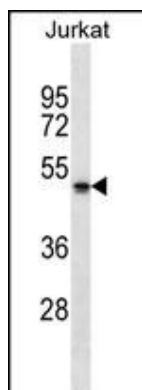
<b>Other Names</b>	Putative neuroblastoma breakpoint family member 5, NBPF5P, NBPF5
<b>Target/Specificity</b>	This NBPF5 antibody is generated from rabbits immunized with a KLH conjugated synthetic peptide between 263-291 amino acids from the C-terminal region of human NBPF5.
<b>Dilution</b>	WB~~1:1000 FC~~1:10~50 E~~Use at an assay dependent concentration.
<b>Format</b>	Purified polyclonal antibody supplied in PBS with 0.09% (W/V) sodium azide. This antibody is purified through a protein A column, followed by peptide affinity purification.
<b>Storage</b>	Maintain refrigerated at 2-8°C for up to 2 weeks. For long term storage store at -20°C in small aliquots to prevent freeze-thaw cycles.
<b>Precautions</b>	NBPF5 Antibody (C-term) is for research use only and not for use in diagnostic or therapeutic procedures.

## Protein Information

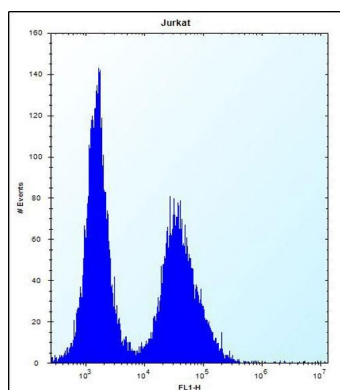
---

<b>Name</b>	NBPF5P ( <a href="#">HGNC:24491</a> )
<b>Synonyms</b>	NBPF5
<b>Cellular Location</b>	Cytoplasm.
<b>Tissue Location</b>	Expressed in brain and medulla.

## Images



NBPF5 Antibody (C-term) (Cat. #AP12364b) western blot analysis in Jurkat cell line lysates (35ug/lane). This demonstrates the NBPF5 antibody detected the NBPF5 protein (arrow).



NBPF5 Antibody (C-term) (Cat. #AP12364b) flow cytometric analysis of Jurkat cells (right histogram) compared to a negative control cell (left histogram). FITC-conjugated donkey-anti-rabbit secondary antibodies were used for the analysis.

Please note: All products are 'FOR RESEARCH USE ONLY. NOT FOR USE IN DIAGNOSTIC OR THERAPEUTIC PROCEDURES'.