

C12orf56 Antibody (N-term)

Affinity Purified Rabbit Polyclonal Antibody (Pab)

Catalog # AP12365a

Product Information

Application	WB, FC, E
Primary Accession	Q8IXR9
Other Accession	NP_001093146.1
Reactivity	Human, Mouse
Host	Rabbit
Clonality	Polyclonal
Isotype	Rabbit IgG
Clone Names	RB31233
Calculated MW	71046
Antigen Region	137-165

Additional Information

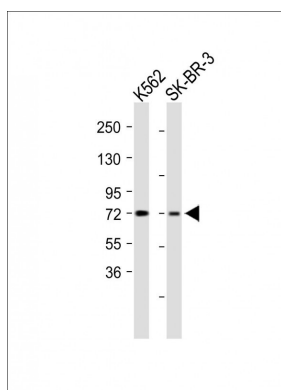
Gene ID	115749
Other Names	Uncharacterized protein C12orf56, C12orf56
Target/Specificity	This C12orf56 antibody is generated from rabbits immunized with a KLH conjugated synthetic peptide between 137-165 amino acids from the N-terminal region of human C12orf56.
Dilution	WB~~1:1000 FC~~1:10~50 E~~Use at an assay dependent concentration.
Format	Purified polyclonal antibody supplied in PBS with 0.05% (V/V) Proclin 300. This antibody is prepared by Saturated Ammonium Sulfate (SAS) precipitation followed by dialysis against PBS.
Storage	Maintain refrigerated at 2-8°C for up to 2 weeks. For long term storage store at -20°C in small aliquots to prevent freeze-thaw cycles.
Precautions	C12orf56 Antibody (N-term) is for research use only and not for use in diagnostic or therapeutic procedures.

Protein Information

Name	C12orf56
-------------	----------

References

Images



All lanes : Anti-C12orf56 Antibody (N-term) at 1:1000 dilution Lane 1: K562 whole cell lysate Lane 2: SK-BR-3 whole cell lysate Lysates/proteins at 20 µg per lane. Secondary Goat Anti-Rabbit IgG, (H+L), Peroxidase conjugated (ASP1615) at 1/15000 dilution. Observed band size : 72kDa Blocking/Dilution buffer: 5% NFDM/TBST.

Please note: All products are 'FOR RESEARCH USE ONLY. NOT FOR USE IN DIAGNOSTIC OR THERAPEUTIC PROCEDURES'.