

# DLL3 Antibody (C-term)

Affinity Purified Rabbit Polyclonal Antibody (Pab)

Catalog # AP12393b

## Product Information

---

<b>Application</b>	IHC-P-Leica, WB, IF, E
<b>Primary Accession</b>	<a href="#">Q9NYJ7</a>
<b>Other Accession</b>	<a href="#">NP_058637.1</a>
<b>Reactivity</b>	Human
<b>Host</b>	Rabbit
<b>Clonality</b>	Polyclonal
<b>Isotype</b>	Rabbit IgG
<b>Clone Names</b>	RB31357
<b>Calculated MW</b>	64618
<b>Antigen Region</b>	545-573

## Additional Information

---

<b>Gene ID</b>	10683
<b>Other Names</b>	Delta-like protein 3, Drosophila Delta homolog 3, Delta3, DLL3
<b>Target/Specificity</b>	This DLL3 antibody is generated from rabbits immunized with a KLH conjugated synthetic peptide between 545-573 amino acids from the C-terminal region of human DLL3.
<b>Dilution</b>	IHC-P-Leica~~1:100 WB~~1:1000 IF~~1:10~50 E~~Use at an assay dependent concentration.
<b>Format</b>	Purified polyclonal antibody supplied in PBS with 0.09% (W/V) sodium azide. This antibody is purified through a protein A column, followed by peptide affinity purification.
<b>Storage</b>	Maintain refrigerated at 2-8°C for up to 2 weeks. For long term storage store at -20°C in small aliquots to prevent freeze-thaw cycles.
<b>Precautions</b>	DLL3 Antibody (C-term) is for research use only and not for use in diagnostic or therapeutic procedures.

## Protein Information

---

<b>Name</b>	DLL3
<b>Function</b>	Inhibits primary neurogenesis. May be required to divert neurons along a specific differentiation pathway. Plays a role in the formation of somite boundaries during segmentation of the paraxial mesoderm (By similarity).

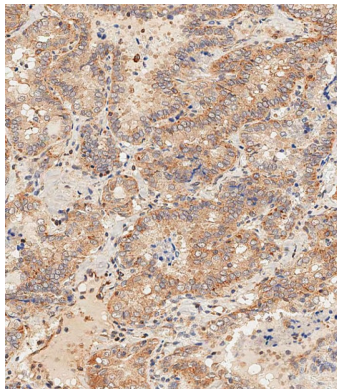
## Background

This gene encodes a member of the delta protein ligand family. This family functions as Notch ligands that are characterized by a DSL domain, EGF repeats, and a transmembrane domain. Mutations in this gene cause autosomal recessive spondylocostal dysostosis 1. Two transcript variants encoding distinct isoforms have been identified for this gene. [provided by RefSeq].

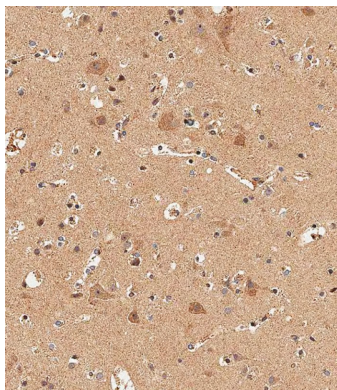
## References

Yerges, L.M., et al. J. Bone Miner. Res. 24(12):2039-2049(2009)  
Heuss, S.F., et al. Proc. Natl. Acad. Sci. U.S.A. 105(32):11212-11217(2008)  
Maisenbacher, M.K., et al. Hum. Genet. 116(5):416-419(2005)  
Whittock, N.V., et al. Clin. Genet. 66(1):67-72(2004)  
Bonafe, L., et al. Clin. Genet. 64(1):28-35(2003)

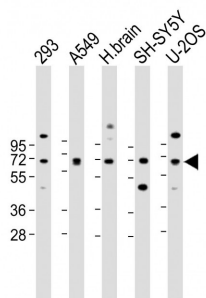
## Images



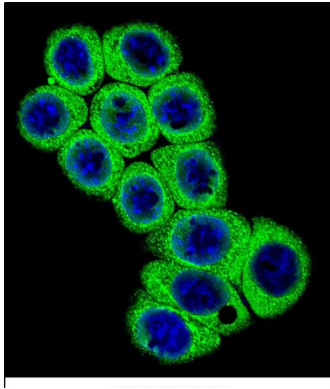
Immunohistochemical analysis of paraffin-embedded Human thyroid carcinoma tissue using AP12393B performed on the Leica® BOND RXm. Tissue was fixed with formaldehyde at room temperature, antigen retrieval was by heat mediation with a EDTA buffer (pH9. 0). Samples were incubated with primary antibody(1:500) for 1 hours at room temperature. A undiluted biotinylated CRF Anti-Polyvalent HRP Polymer antibody was used as the secondary antibody.



Immunohistochemical analysis of paraffin-embedded Human brain tissue using AP12393B performed on the Leica® BOND RXm. Tissue was fixed with formaldehyde at room temperature, antigen retrieval was by heat mediation with a EDTA buffer (pH9. 0). Samples were incubated with primary antibody(1:500) for 1 hours at room temperature. A undiluted biotinylated CRF Anti-Polyvalent HRP Polymer antibody was used as the secondary antibody.



All lanes : Anti-DLL3 Antibody (C-term) at 1:2000 dilution  
Lane 1: 293 whole cell lysate Lane 2: A549 whole cell lysate Lane 3: Human brain lysate Lane 4: SH-SY5Y whole cell lysate Lane 5: U-2OS whole cell lysate  
Lysates/proteins at 20 µg per lane. Secondary Goat Anti-Rabbit IgG, (H+L), Peroxidase conjugated at 1/10000 dilution. Predicted band size : 65 kDa Blocking/Dilution buffer: 5% NFDM/TBST.



Confocal immunofluorescent analysis of DLL3 Antibody (C-term)(Cat#AP12393b) with 293 cell followed by Alexa Fluor 488-conjugated goat anti-rabbit IgG (green). DAPI was used to stain the cell nuclear (blue).

Please note: All products are 'FOR RESEARCH USE ONLY. NOT FOR USE IN DIAGNOSTIC OR THERAPEUTIC PROCEDURES'.